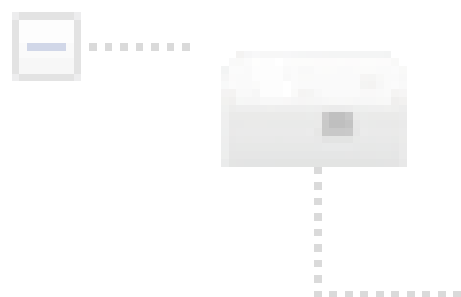


SimonsVoss OAM Tool Version 1.3



SimonsVoss Device V01.00

192.168.100.24 (D8-9)

Version: V01.00.00)

OAM-Tool

Manual

28.07.2020

Simons Voss
technologies

operating system: Microsoft Windows 1

Contents

1	Meaning of the text formatting	3
2	Determining and setting the IP address	4
3	Browser interface.....	9
4	Help and other information	12

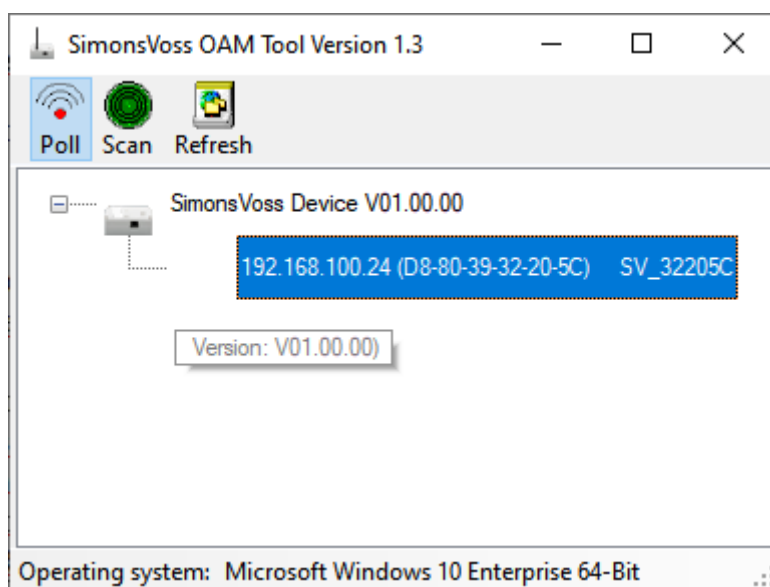
1 Meaning of the text formatting

This documentation uses text formatting and design elements to facilitate understanding. The table explains the meaning of possible text formatting:

Example	button
<input checked="" type="checkbox"/> Example	checkbox
<input type="checkbox"/> Example	
<input checked="" type="radio"/> Example	Option
[Example]	Tab
"Example"	Name of a displayed window
Example	Upper programme bar
Example	Entry in the expanded upper programme bar
Example	Context menu entry
▼ Example	Name of a drop-down menu
"Example"	Selection option in a drop-down menu
"Example"	Area
Example	Field
<i>Example</i>	Name of a (Windows) service
<i>Example</i>	Commands (e.g. Windows CMD commands)
Example	Database entry
[Example]	MobileKey type selection

2 Determining and setting the IP address

With the Operation, Administration and Maintenance Tool (OAM tool) you can both read and set the IP address. The OAM tool is available free of charge in the download area of the SimonsVoss website (<https://www.simons-voss.com>). You do not need to install the OAM tool.



IMPORTANT

Unauthorised changing of the IP address

The OAM tool is freely accessible. The OAM tool can be misused by unauthorized persons to change the IP address of your RouterNodes, GatewayNodes or SmartBridges.

- ❑ Block changing the IP address in the OAM Tool via the browser interface (see *Browser interface* [▶ 9]).



NOTE

Unauthorised access with standard access data

The standard access data can be viewed freely. Unauthorised persons cannot change the access authorisations, but they can change the network configuration. You will then no longer be able to reach the device via the network and will have to reset it.

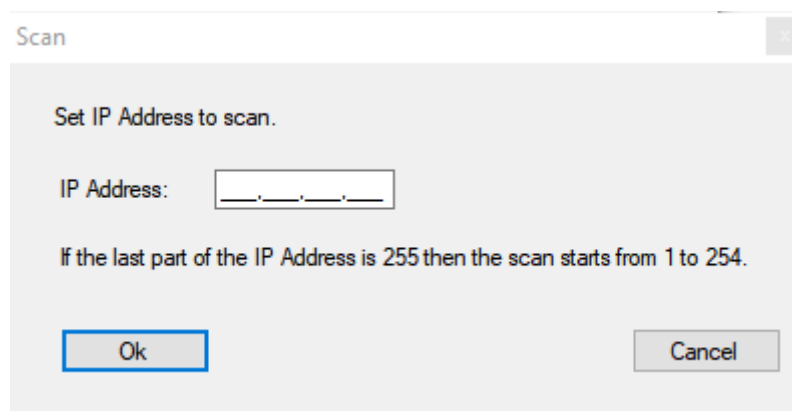
Some browsers do not transmit spaces at the beginning of the password.

1. Change the default password.
2. Do not start the password with spaces.

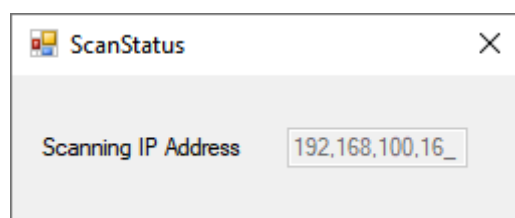
Determining the IP

The procedure is described for RouterNodes. Follow the same procedure for SmartIntego GatewayNodes and MobileKey SmartBridges.

- ✓ OAM tool available and unpacked.
 - ✓ RouterNode connected to the network.
 - ✓ Subnet known.
1. Double-click on the executable file to start the OAM tool.
 - ↳ OAM Tool opens.
 2. Click on the button **Scan**.
 - ↳ The window "Scan" opens.



3. Enter a known IP address of a device in the WaveNet network (other or new devices are also found. If you do not know an IP address, use the following IP address: 192.168.100.255 - may differ depending on the subnet).
4. Click on the **OK** button.
 - ↳ The "Scan" window closes.
 - ↳ The OAM tool scans the address range.



- ↳ The OAM tool displays found devices in the list.

You can choose: DHCP server or static IP. You can also make the settings described below in the browser interface (see [Browser interface \[▶ 9\]](#)).

The procedure is described for RouterNodes. Follow the same procedure for SmartIntego GatewayNodes and MobileKey SmartBridges.

Setting IP for DHCP operation (default)

If you use a DHCP server, the IP address is determined by a DHCP server.

- ✓ OAM tool available and unpacked.
 - ✓ RouterNode connected to the network.
1. Double-click on the executable file to start the OAM tool.
 - ↳ The OAM tool opens.
 2. Click on the button **Refresh**.
 - ↳ IP address of the RouterNode updated.
 3. Open the context menu by right-clicking on the entry of the IP address of the RouterNode.



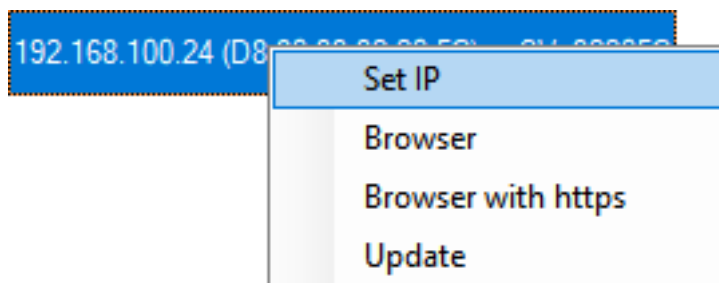
NOTE

Compare MAC

If you select the wrong RouterNode, you could assign the same IP address multiple times.

- Compare the MAC address of the entry with the label on your RouterNode.

4. Click on the entry **Set IP**.



- ↳ The window "Network configuration" opens.
5. Make sure that the checkbox Enable DHCP is activated.
 6. If no address reservation on the DHCP server is provided for this RouterNode, make a note of the *host name* (e.g. SV_32205C). You will need it later during configuration in the WaveNet Manager (see Add RouterNode to WaveNet).
 7. Click on the **OK** button.
 - ↳ The window "Network configuration" closes.
 - ↳ RouterNode will restart.
 8. Close the information window about the restart.
 9. Close the OAM tool.
 - ↳ DHCP operation is set.

Set IP for operation with static IP address

If you are not using a DHCP server, the IP address is the factory default. In this case you must change the IP address, otherwise several router nodes will have the same IP (namely the factory IP) and will not be able to communicate.

- ✓ OAM tool available and unpacked.
 - ✓ RouterNode connected to the network.
1. Double-click on the executable file to start the OAM tool.
 - ↳ The OAM tool opens.
 2. Click on the button **Refresh**.
 - ↳ IP address of the RouterNode updated.
 3. Open the context menu by right-clicking on the entry of the IP address of the RouterNode.



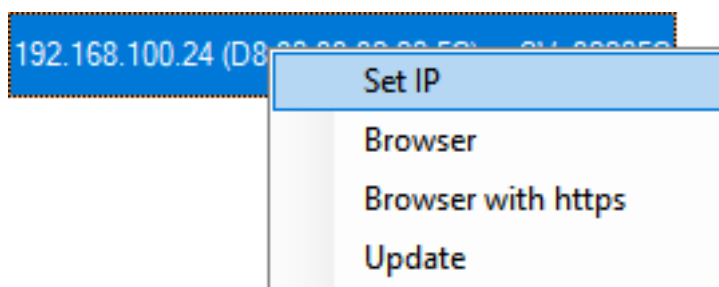
NOTE

Compare MAC

If you select the wrong RouterNode, you could assign the same IP address multiple times.

- Compare the MAC address of the entry with the label on your RouterNode.

4. Click on the entry **Set IP**.



- ↳ The window "Network configuration" opens.

Network configuration

Set your network configuration.

Host name: SV_32205C

MAC Address: D8-80-39-32-20-5C

Enable DHCP

IP Address: 192.168.100.024

Subnet Mask: 255.255.255.000

Default Gateway: 192.168.100.001

Ok Cancel

5. Deactivate the checkbox Enable DHCP.
6. Enter a new IP address, if necessary.
7. Click on the **OK** button.
 - ↳ The "Network configuration" window closes.
 - ↳ RouterNode will restart.
8. Close the information window about the restart.
9. Close the OAM tool.
 - ↳ IP address is set.

3 Browser interface

You can make settings for RouterNodes, GatewayNodes and SmartBridges with Ethernet interface via the browser, among other things:

- Allow changes via the OAM tool
- Password for the web interface
- IP address/DHCP operation

request

You receive the device with the following factory configuration:

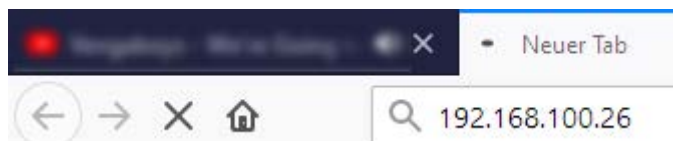
IP address	192.168.100.100 (if no DHCP server is found)
Subnet mask	255.255.0.0
User name	SimonsVoss
Password	SimonsVoss

The procedure is described for RouterNodes. Follow the same procedure for SmartIntego GatewayNodes and MobileKey SmartBridges.

Change the default password after the first call.

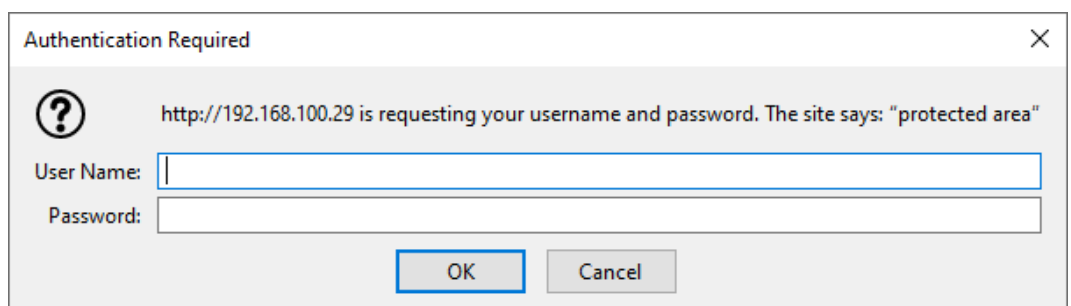
- ✓ IP of the RouterNode is known (see *Determining and setting the IP address* [▶ 4]).
- ✓ Browser open.
- ✓ Access data to the browser interface (name and password) known.

1. Enter the IP address in the address field of your browser.



2. Confirm the entry with the Enter key.

- ↳ The window "Authentication required" opens.



3. Enter the access data.

4. Click on the **OK** button.

↳ The system overview of the browser interface is visible.

OVERVIEW
WAVENET
CONNECTION

System Information: Overview

Version:

Firmware version: 40.11.00

Basic network settings:

MAC Address:	94:50:89:00:36:44
Host Name:	SV_003644
DHCP:	On
IP-Address:	192.168.100.26
Subnetmask:	255.255.255.0
Gateway:	192.168.100.1
DNS-Server1:	192.168.100.1
DNS-Server2:	0.0.0.0
SV Port:	2101
SV SecPort:	2153



NOTE

Unauthorised access with standard access data

The standard access data can be viewed freely. Unauthorised persons cannot change the access authorisations, but they can change the network configuration. You will then no longer be able to reach the device via the network and will have to reset it.

Some browsers do not transmit spaces at the beginning of the password.

1. Change the default password.
2. Do not start the password with spaces.

Blocking/permitting a change of IP address via the OAM tool

As long as you do not allow the ▼ **OAM-Tool allow**, you cannot import updates via the OAM tool.

✓ Browser interface open.

1. Via | CONFIGURATION | open the tab [PORT].
↳ You see the overview of the TCP port settings of RouterNode 2.

NETWORK
PORT
ETHERNET INTERFACE
WAVENET

Configuration: port settings

TCP port settings:

SV Port:	<input type="text" value="2101"/>
SV SecPort:	<input type="text" value="2153"/>
SV connection timeout [s]:	<input type="text" value="30"/>
HTTP:	<input type="text" value="On"/>
Telnet:	<input type="text" value="Off"/>
OAM-Tool allow:	<input type="text" value="Yes"/>

2. In the dropdown menu ▼ **OAM-Tool allow** select the entry "Yes" (allow for change of IP by OAM tool) or "No" (block change of IP by OAM tool).

3. Click on the button **Save**.

↳ Changing the IP address via the OAM-Tool is blocked/allowed.

Change password

Some browsers do not transmit spaces that are at the beginning of the password. Therefore do not start the password with spaces.

✓ Browser interface open.

1. Via | ADMINISTRATION | open the tab [PASSWORD].

PAS SWORD
CERTIFICATE
FACTORY
REBOOT

Administration: Change password

New password:

New password:	<input type="text"/>
Confirm password:	<input type="text"/>

2. Enter your new password.

3. Repeat your new password.

4. Click on the button **Save password**.

↳ Password is changed.

4 Help and other information

Information material/documents

You will find detailed information on operation and configuration and other documents under Informative material/Documents in the Download section on the SimonsVoss website (<https://www.simons-voss.com/en/downloads/documents.html>).

Instruction manuals

You will find detailed information on operation and configuration online on our homepage at www.smartintego.com.

Software and drivers

Software and drivers can be found on the SimonsVoss homepage in the service area during software downloads (<https://www.simons-voss.com/en/service/software-downloads.html>).

Declarations of conformity

You will find declarations of conformity for this product in the Certificate section on the SimonsVoss website (<https://www.simons-voss.com/en/certificates.html>).

Hotline

If you have any questions, the SimonsVoss Service Hotline will be happy to help you on +49 (0)89 99 228 333 (German fixed network; call charges vary depending on the operator).

Email

You may prefer to send us an email.

support-simonsvoss@allegion.com (System 3060, MobileKey)

si-support-simonsvoss@allegion.com (SmartIntego)

FAQs

You will find information and help for SimonsVoss products in the FAQ section on the SimonsVoss website (<https://faq.simons-voss.com/otrs/public.pl>).

Address

SimonsVoss Technologies GmbH
Feringastrasse 4
85774 Unterföhring
Germany



This is SimonsVoss

SimonsVoss is a technology leader in digital locking systems.

The pioneer in wirelessly controlled, cable-free locking technology delivers system solutions with an extensive product range for SOHOs, SMEs, major companies and public institutions.

SimonsVoss locking systems unite intelligent functions, optimum quality and award-winning German-made design. As an innovative system provider, SimonsVoss attaches great importan-

ce to scalable systems, effective security, reliable components, high-performance software and simple operation.

Our commercial success lies in the courage to innovate, sustainable thinking and action, and heartfelt appreciation of employees and partners. With its headquarters in Unterföhring, near Munich, and its production site in Osterfeld, eastern Germany, the company employs around 300 staff in eight countries.

SimonsVoss is a company in the ALLEGION Group, a globally active network in the security sector. Allegion is represented in around 130 countries worldwide (www.allegion.com).

© 2020, SimonsVoss Technologies GmbH, Unterföhring

All rights are reserved. Text, images and diagrams are protected under copyright law.

The content of this document must not be copied, distributed or modified. More information about this product can be found on the SimonsVoss website. Subject to technical changes.

SimonsVoss and MobileKey are registered brands belonging to SimonsVoss Technologies GmbH.

