



# Product Catalogue SmartIntego

**The perfect solution for integrated access control**

Valid from 1st of November 2016





---

04 SMART INTEGO

---

PRODUCT LINE

---

06 DIGITAL LOCKING CYLINDERS  
– LOCKING CYLINDER SI

---

26 DIGITAL SMART HANDLES  
– SMART HANDLE SI  
– SMART HANDLE  
INSTALLATION SI  
– SMART HANDLE SKG SI  
– SMART HANDLE  
SCANDINAVIAN OVAL SI

---

48 DIGITAL PIN CODE TERMINALS  
– PIN CODE TERMINAL SI

---

50 DIGITAL  
PADLOCKS  
– PADLOCK SI

---

54 PROGRAMMING  
– PROGRAMMING

---

NETWORK STRUCTURE

---

56 GATEWAY NODE SI

---

CONFIGURATION  
SOFTWARE

---

60 CONFIGURATION  
SOFTWARE SI

---

SUPPORT

---

63 SERVICES AND TRAINING  
64 PRODUCT OVERVIEW

---

CONTACT

---

65 SIMONS VOSS WORLDWIDE

---

# Nine compelling reasons: Why SmartIntego has special appeal for operators of complex building systems.

## 1. Components successful worldwide

More than 12,000 SimonsVoss digital locking and access control systems with over 1.2 million locking devices impress with their precision and reliability in tough, practical use.

## 2. Supports all major card formats

MIFARE® Classic, MIFARE Plus®, MIFARE® DESFire® / EV1, Calypso CSN, ISO 7816-4 Elementary File, and UID (CSN) as per ISO 14443 in conjunction with MIFARE®, Legic Advant and HID® iClass.

## 3. Made in Germany

All system components are developed and produced to the highest standards exclusively in Germany.

## 4. Less work involved for integration

Powerful communications protocols and a high degree of automation thanks to SmartIntego Manager reduces significantly the work involved to integrate SmartIntego.

## 5. Optimally networked at all times – also virtually

The exchange management of security-relevant information between the management system and SmartIntego access media is guaranteed for each locking operation in Virtual CardNetwork mode.

## 6. Unique wireless technology

Wider ranges in the wireless network due to 868-MHz technology ensures no interference from other networks, such as WLAN and Bluetooth in the 2.4 GHz range.

## 7. Flawless performance

With two integrated batteries, the SmartIntego locking cylinder and the SmartIntego SmartHandle provide up to 80,000 activations and five years on standby in wireless online mode and up to 50,000 activations and six years in standby mode in a Virtual CardNetwork. This ensures years of operation without needing to replace batteries.

## 8. Range of versions for every type of use

Digital SmartHandle is available in Euro Profile, Swiss Round and Scandinavian Oval versions. There is also a Scandinavian Round version of the digital locking cylinder.

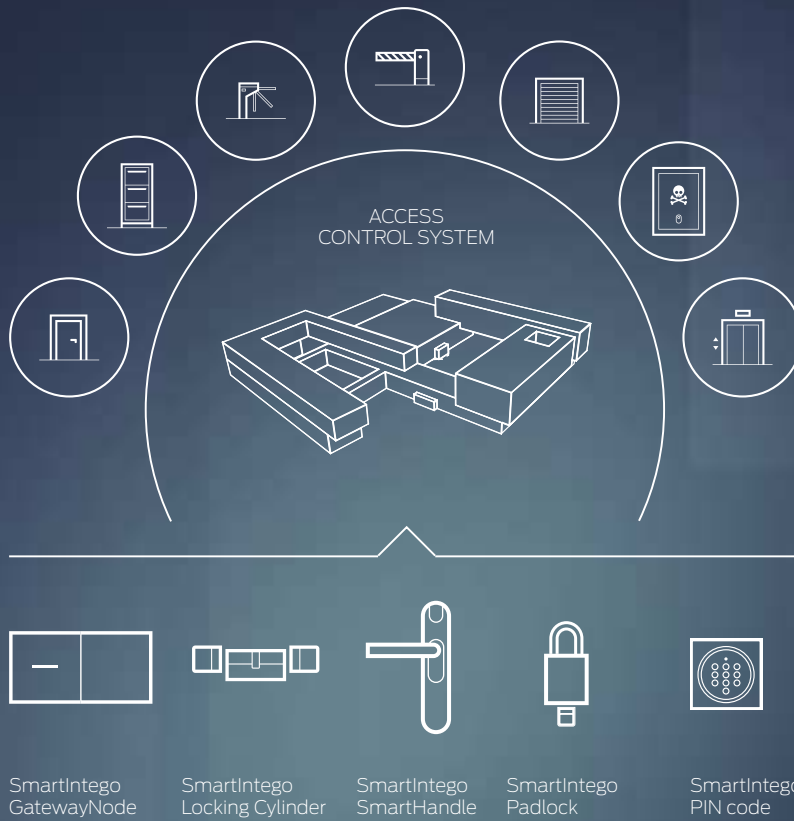
## 9. Perfect in form to the very last detail

Anything which is efficient and useful should also be beautiful. The SmartIntego locking cylinder and the SmartIntego SmartHandle have been honoured with many design awards.



# The perfect solution for integrated access control

SmartIntego Locking Cylinder, SmartHandle, PIN code Terminal, Padlock and GatewayNode – SmartIntego components can be easily integrated into complex security systems.



With its high-performance communications protocols, SmartIntego can be seamlessly incorporated into existing control systems for building security technology. System component auto-configuration in SmartIntego Manager ensures that there is far less work involved in component integration compared to other systems.

The scope of services and features match high expectations which building operators have of innovation leaders for digital locking and access control systems. One advantage of the system is its 868-MHz technology, which ensures wide, interference-free ranges in the radio network.

The SmartIntego product line consisting of locking cylinders, SmartHandles, PIN codes and padlocks can handle the transmission standards in all established card formats such as MIFARE® Classic, MIFARE Plus®, MIFARE® DESFire® / EV1, Calypso CSN, ISO 7816-4 Elementary File, and UID (CSN) as per ISO 14443 in conjunction with MIFARE®, Legic Advant and HID iClass.

In SmartIntego, SimonsVoss offers a solution with components which have proven their worth a thousand times over in practical use. These components excel thanks to their German-made quality and excellent design. Unique functions also ensure optimum security – for people, for investment and for the future.

---

## Digital locking with SmartIntego – highlights

---

### STATE OF THE ART

Integration of electronic instead of mechanical access control in existing building systems based on flexible interfaces, high-performance protocols and open system design.

### USE OF EXISTING IT INFRASTRUCTURE

SmartIntego can also be integrated into heterogeneous IT infrastructures via existing user interfaces at no great cost without the added complication of connecting through additional databases or software.

### SIMPLE, CABLE-FREE INSTALLATION

Cables do not need to be installed or connected. Standard button cells ensure that cylinders and SmartHandles do not depend on an external power supply.

### SNAP-IN INSTALLATION

The system features a unique mounting technology to affix SmartHandles to doors without needing to drill holes. This brings real benefits for rental property and fire doors, where drilling is forbidden.

### EXTREMELY LONG BATTERY LIFE

In wireless online mode, the battery cells can manage up to 80,000 activations, while the average battery life in standby mode is five years.

### MAXIMUM SECURITY

Events logged to record which users have gained access to a particular place at specific times. Lost ID media instantly blocked and unauthorised key copying eliminated (3D printing).

### EXCEPTIONALLY FLEXIBLE WITHOUT LIMITATIONS

Extremely simple processes thanks to interfaces between HR department and locking system management. Problem-free handling of modifications to the organisation and room use in places where employees change on a frequent basis. ID media can be issued with limited validity for users such as visitors or maintenance staff

### LOW COSTS FOR ADMINISTRATION AND TRAINING

Intuitive operation using existing software ensures that the time and expense for administration and training are kept to a minimum.

---



DIGITAL  
LOCKING CYLINDERS  
SMART INTEGO



## Multifunctional and easy to assemble, even as a retrofit

The SimonsVoss SmartIntego Digital Locking Cylinder provides service exactly as required at each point throughout the building – in entrance areas and interiors or on doors to a guest room, hallway, laboratory, archive, server room or basement. Its intelligent internal components and wide range of different designs, such as those for anti-panic and fire doors, provide precisely matched solutions for virtually any application.

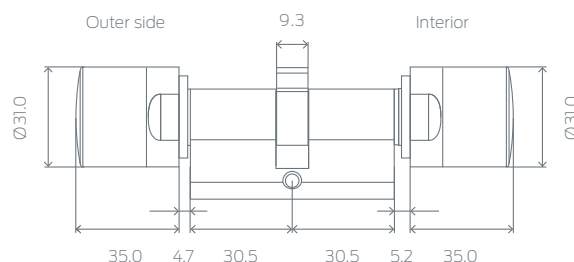
In addition to a high security standard and remarkable flexibility, the SmartIntego Digital Locking Cylinder is also extremely easy to fit. It is installed in minutes with no need for any wiring or drilling. Standard button cells reliably ensure up to 80,000 locking operations in a wireless online network. An average battery life of five years can be expected in standby mode. In other words, like other SmartIntego components, the locking cylinder is maintenance-free for many years.

The digital locking cylinder matches its surroundings with a beautiful, timeless design available in different versions, such as Euro Profile, Scandinavian Round or Oval, and Swiss Round.



# DIGITAL EURO PROFILE DOUBLE THUMB-TURN CYLINDER SMART INTEGO – COMFORT

Digital Locking Cylinder – SmartIntego with an enclosed electronics assembly as per DIN 18252 / DIN EN 15684 / EN 1303 for fitting into Euro Profile locks as per DIN 18251. Approval for fitting into locking devices as per DIN 18250.



Measurements indicated in mm

- ⚡ Inner side is permanently engaged
- ⚡ Wireless online: MIFARE® Classic, MIFARE Plus®, MIFARE® DESFire® / EV1, Calypso CSN, ISO 7816-4 Elementary File, and UID (CSN) as per ISO 14443 in conjunction with MIFARE®, Legic Advant and HID® iClass
- ⚡ Virtual CardNetwork: MIFARE® Classic or MIFARE® DESFire® / EV1
- ⚡ Versions with IP66 weather protection rating
- ⚡ Wireless online models: directly networked on 868 MHz
- ⚡ Virtual CardNetwork: for use in virtual networks

Worldwide cable-free networking with the SimonsVoss SmartIntego system in a direct or virtual network.

In the 868 MHz wireless online network, operators can use established MIFARE® Classic IDs and MIFARE Plus®, MIFARE® DESFire® / EV1, Calypso CSN, ISO 7816-4 Elementary File, and UID (CSN) as per ISO 14443 in conjunction with MIFARE®, Legic Advant and HID® iClass technology without any reprogramming. MIFARE® Classic or MIFARE® DESFire® / EV1 can be used in network-ready locking devices in the version as a Virtual CardNetwork.

## TECHNICAL SPECIFICATIONS

- ⚡ Standard Euro Profile cylinder as per DIN 18252 / EN1303 / DIN EN 15684
- ⚡ Thumb-turn diameter: 31 mm
- ⚡ Basic installation length: 30-30 mm (external/internal dimension)
- ⚡ Overall length: up to 140 mm (max. 90 mm on one side); special lengths on request
- ⚡ Standard protection rating IP54, WP version IP66
- ⚡ Battery type: 2 x lithium CR2450 3 V
- ⚡ Battery life:
  - Wireless online: up to 80,000 locking activations
  - Virtual CardNetwork: up to 50,000 locking activations
  - Wireless online stand-by: up to 5 years
  - Virtual CardNetwork stand-by: up to 6 years
- ⚡ Temperature range: Operational: -25 °C to +65 °C
- ⚡ Audible feedback signal from a buzzer
- ⚡ Visual feedback signal from blue/red LED



DIGITAL EURO PROFILE  
DOUBLE THUMB-TURN  
CYLINDER  
SMART INTEGO –  
COMFORT

WIRELESS ONLINE NETWORK  
(868 MHz)

- ⌘ Reads 5 different card set-ups
- ⌘ Opened after release by access control system (short release interval) with variable time settings
- ⌘ Permanent release (on/off) with timer function
- ⌘ Office mode with timer function
- ⌘ Construction White List function with up to 128 cards
- ⌘ White List function with up to 250 offline cards
- ⌘ Access list for offline mode
- ⌘ Battery status transmission and QoS (Quality of Signal)
- ⌘ Configurable “keep alive” event
- ⌘ Integrator Lock
- ⌘ Firmware update for locking devices via wireless interface
- ⌘ Auto-configuration via SmartIntego Manager (in TCP/IP GatewayNode models only)

VIRTUAL CARD NETWORK  
“VIRTUAL NETWORKING”

- ⌘ Issue of authorisations (access) based on groups and exception functions
- ⌘ Battery status feedback
- ⌘ Blacklist transfer, including feedback signal
- ⌘ Physical access lists
- ⌘ Time budget / expiry date
- ⌘ Data deletion on online terminal
- ⌘ Initial programming possible using access control manufacturer’s online reader
- ⌘ Time profiles on the card
- ⌘ Data transmission secure during writing and read procedure

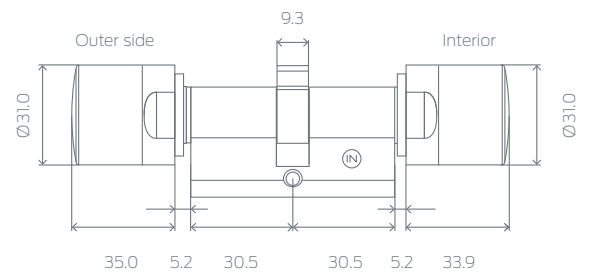
PRODUCT VERSIONS	WIRELESS ONLINE	VIRTUAL CARD NETWORK
Digital Euro Profile Double Thumb-Turn Cylinder SI – Comfort Installation length 30-30 mm, stainless steel design, internal power supply, door thumb-turn on both sides; can be operated from the outside with smart cards/smart tags; no medium required to operate from the inside; no wiring necessary	SI.Z4.30-30.MI.CO	SI.Z4.30-30.M.CO
Brass design (on request)	.MS	.MS
Version with IP66 weather protection rating	.WP	.WP

INSTALLATION LENGTHS (all length specifications: external - internal)

Overall length from 65 mm to 80 mm	e.g. SI.Z4.40-40.MI.CO	e.g. SI.Z4.40-40.M.CO
Overall length over 80 mm to 100 mm	e.g. SI.Z4.40-60.MI.CO	e.g. SI.Z4.40-60.M.CO
Overall length over 100 mm up to max. 140 mm (max. 90 mm on one side)	e.g. SI.Z4.65-75.MI.CO	e.g. SI.Z4.65-75.M.CO
Overall length over 140 mm or over 90 mm on one side	on request	on request

# DIGITAL EURO PROFILE DOUBLE THUMB-TURN CYLINDER SMART INTEGO – FD

Digital Locking Cylinder – SI with an enclosed electronics assembly as per DIN 18252 / DIN EN 15684 / EN 1303 for fitting into Euro Profile locks as per DIN 18251. Approval for fitting into locking devices as per DIN 18250 (fire protection).



Measurements indicated in mm

- ⚡ Freely rotating on both sides – Reader inside and outside
- ⚡ Wireless online: MIFARE® Classic, MIFARE Plus®, MIFARE® DESFire® / EV1, Calypso CSN, ISO 7816-4 Elementary File, and UID (CSN) as per ISO 14443 in conjunction with MIFARE®, Legic Advant and HID® iClass
- ⚡ Versions with IP66 weather protection rating
- ⚡ Wireless online models: directly networked on 868 MHz
- ⚡ SKG certified for Wireless online version with a reader on both sides (.BL) available as an option

In the 868 MHz wireless online network, operators can use established MIFARE® Classic IDs and MIFARE Plus®, MIFARE® DESFire® / EV1, Calypso CSN, ISO 7816-4 Elementary File, and UID (CSN) as per ISO 14443 in conjunction with MIFARE®, Legic Advant and HID® iClass technology without any reprogramming.

## TECHNICAL SPECIFICATIONS

- ⚡ Digital Euro Profile Cylinder as per DIN 18252 / EN1303 / DIN EN 15684, stainless steel design, freely rotating on both sides
- ⚡ Thumb-turn diameter: 31 mm
- ⚡ Basic installation length: 30-30 mm (external/internal dimension)
- ⚡ Overall length: up to 140 mm (max. 90 mm on one side); special lengths on request
- ⚡ Standard protection rating IP54, WP version IP66
- ⚡ Battery type: 4 x lithium CR2450 3 V
- ⚡ Battery life:
  - Wireless online: up to 80,000 locking activations -
  - Wireless online standby: up to 5 years
- ⚡ Temperature range: Operational: -25 °C to +65 °C
- ⚡ Audible feedback signal from a buzzer
- ⚡ Visual feedback signal from blue/red LED

DIGITAL EURO PROFILE  
DOUBLE THUMB-TURN  
CYLINDER  
SMART INTEGO – FD

WIRELESS ONLINE NETWORK  
(868 MHz)

- ⌘ Reads 5 different card set-ups
- ⌘ Opened after release by access control system (short release interval) with variable time settings
- ⌘ Permanent release (on/off) with timer function
- ⌘ Office mode with timer function
- ⌘ Construction White List function with up to 128 cards
- ⌘ White List function with up to 250 offline cards
- ⌘ Access list for offline mode
- ⌘ Battery status transmission and QoS (Quality of Signal)
- ⌘ Configurable “keep alive” event
- ⌘ Integrator Lock
- ⌘ Firmware update for locking devices via wireless interface
- ⌘ Auto-configuration via SmartIntego Manager (in TCP/IP GatewayNode models only)

PRODUCT VERSIONS

WIRELESS ONLINE

Digital Euro Profile Double Thumb-Turn Cylinder SI – FD  
Installation length 30-30 mm, stainless steel design, internal power supply, freely rotating on both sides; can be operated on the inside and outside with smart cards/smart tags; no wiring necessary

SI.Z4.30-30.MI.FD

Brass design (on request)

.MS

Multi-point lock version for use in doors with multi-point locks

.MR

Versions with IP66 weather protection rating

.WP

Version with SKG approval SKG\*\*\*

.SKG

INSTALLATION LENGTHS (all length specifications: external - internal)

Overall length from 65 mm to 80 mm

e.g. SI.Z4.40-40.MI.FD

Overall length over 80 mm to 100 mm

e.g. SI.Z4.40-60.MI.FD

Overall length over 100 mm up to max. 140 mm  
(max. 90 mm on one side)

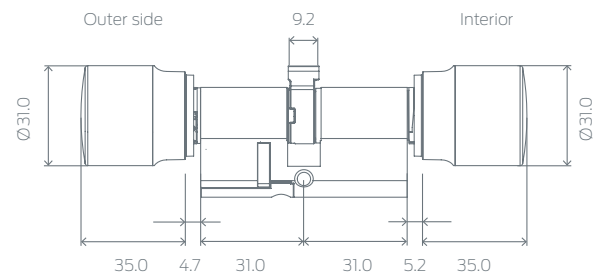
e.g. SI.Z4.65-75.MI.FD

Overall length over 140 mm or over 90 mm on one side

on request

# DIGITAL EURO PROFILE DOUBLE THUMB-TURN CYLINDER SMART INTEGO – ANTI-PANIC

Digital Locking Cylinder – SI with an enclosed electronics assembly as per DIN 18252 / DIN EN 15684 / EN 1303 for fitting into escape doors as per EN 179 and DIN 1125. Approval for fitting into locking devices as per DIN 18250 (fire protection).



Measurements indicated in mm

- ⚡ Strong spring-back mechanism
- ⚡ Wireless online: MIFARE® Classic, MIFARE Plus®, MIFARE® DESFire® / EV1, Calypso CSN, ISO 7816-4 Elementary File, and UID (CSN) as per ISO 14443 in conjunction with MIFARE®, Legic Advant and HID® iClass
- ⚡ Virtual CardNetwork: MIFARE® Classic or MIFARE® DESFire® / EV1
- ⚡ Option with free rotation and reader on both sides – Reader unit inside and outside (“BL” version with reader on both sides is not supported in Virtual CardNetwork)
- ⚡ Versions with IP66 weather protection rating
- ⚡ Wireless online models: directly networked on 868 MHz
- ⚡ Virtual CardNetwork: for use in virtual networks
- ⚡ SKG certified for Wireless online version with a reader on both sides (.BL) available as an option

Worldwide cable-free networking with the SimonsVoss SmartIntego system in a direct or virtual network.

In the 868 MHz wireless online network, operators can use established MIFARE® Classic IDs and MIFARE Plus®, MIFARE® DESFire® / EV1, Calypso CSN, ISO 7816-4 Elementary File, and UID (CSN) as per ISO 14443 in conjunction with MIFARE®, Legic Advant and HID® iClass technology without any reprogramming. MIFARE® Classic or MIFARE® DESFire® / EV1 can be used in network-ready locking devices in the version as a Virtual CardNetwork.

## TECHNICAL SPECIFICATIONS

- ⚡ Digital Euro Profile Anti-Panic Cylinder as per DIN 18252 / EN 1303 / DIN EN 15684
- ⚡ Thumb-turn diameter: 31 mm
- ⚡ Basic installation length: 30-30 mm (external/internal dimension)
- ⚡ Overall length: up to 140 mm (max. 90 mm on one side); special lengths on request
- ⚡ Standard protection rating IP54, WP version IP66 (electronic thumb-turn)
- ⚡ Battery type: 2 x lithium CR2450 3 V
- ⚡ Battery life:
  - Wireless online: up to 80,000 locking activations
  - Virtual CardNetwork: up to 50,000 locking activations
  - Wireless online stand-by: up to 5 years
  - Virtual CardNetwork stand-by: up to 6 years
- ⚡ Temperature range: Operational: -25 °C to +65 °C
- ⚡ Audible feedback signal from a buzzer
- ⚡ Visual feedback signal from blue/red LED

DIGITAL EURO PROFILE  
DOUBLE THUMB-TURN  
CYLINDER  
SMART INTEGO –  
ANTI-PANIC

WIRELESS ONLINE NETWORK  
(868 MHz)

- ⌘ Reads 5 different card set-ups
- ⌘ Opened after release by access control system (short release interval) with variable time settings
- ⌘ Permanent release (on/off) with timer function
- ⌘ Office mode with timer function
- ⌘ Construction White List function with up to 128 cards
- ⌘ White List function with up to 250 offline cards
- ⌘ Access list for offline mode
- ⌘ Battery status transmission and QoS (Quality of Signal)
- ⌘ Configurable “keep alive” event
- ⌘ Integrator Lock
- ⌘ Firmware update for locking devices via wireless interface
- ⌘ Auto-configuration via SmartIntego Manager (in TCP/IP GatewayNode models only)

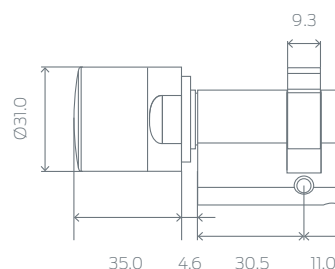
VIRTUAL CARD NETWORK  
“VIRTUAL NETWORKING”

- ⌘ Issue of authorisations (access) based on groups and exception functions
- ⌘ Battery status feedback
- ⌘ Blacklist transfer, including feedback signal
- ⌘ Physical access lists
- ⌘ Time budget/ expiry date
- ⌘ Data deletion on online terminal
- ⌘ Initial programming possible using access control manufacturer’s online reader
- ⌘ Time profiles on the card
- ⌘ Data transmission secure during writing and read procedure

PRODUCT VERSIONS	WIRELESS ONLINE	VIRTUAL CARD NETWORK
Digital Euro Profile Double Thumb-Turn Cylinder SI – Anti-Panic – FD Installation length 30–30 mm, for use in anti-panic locks; stainless steel design, freely rotating on both sides, internal power supply; door thumb-turn on both sides; can be operated from the outside with smart cards/smart tags; no wiring required	SI.Z4.30-30.MI.AP2.FD	SI.Z4.30-30.M.AP2.FD
Digital Euro Profile Double Thumb-Turn Cylinder SI – Anti-Panic – FD Installation length 30–30 mm, for use in anti-panic locking devices; stainless steel design, freely rotating on both sides, internal power supply; door thumb-turn on both sides; can be operated from the outside with smart cards/smart tags; no wiring required	SI.Z4.30-30.MI.AP2.BL	
Brass design (on request)	.MS	.MS
Version with IP66 weather protection rating (electronic thumb turn)	.WP	.WP
Version without inside thumb-turn (not supplied in combination with SKG)	.OK	.OK
Version with SKG approval SKG*** (can only be supplied in conjunction with AP2.BL)	.SKG	
INSTALLATION LENGTHS (all length specifications: external - internal)		
Overall length from 65 mm to 80 mm	e.g. SI.Z4.40-40.MI.AP2.FD	e.g. SI.Z4.40-40.M.AP2.FD
Overall length over 80 mm to 100 mm	e.g. SI.Z4.40-60.MI.AP2.FD	e.g. SI.Z4.40-60.M.AP2.FD
Overall length over 100 mm up to max. 140 mm (max. 90 mm on one side)	e.g. SI.Z4.65-75.MI.AP2.FD	e.g. SI.Z4.65-75.M.AP2.FD
Overall length over 140 mm or over 90 mm on one side	on request	on request

# DIGITAL EURO PROFILE HALF CYLINDER – SMART INTEGO

Digital Half Cylinder – SI with an enclosed electronics assembly as per DIN 18252 / DIN EN 15684 / EN 1303 for fitting into Euro Profile locks as per DIN 18251 for special applications, such as use on garage doors or in lockers.



Measurements indicated in mm

- ⚡ Wireless online: MIFARE® Classic, MIFARE Plus®, MIFARE® DESFire® / EV1, Calypso CSN, ISO 7816-4 Elementary File, and UID (CSN) as per ISO 14443 in conjunction with MIFARE®, Legic Advant and HID® iClass
- ⚡ Virtual CardNetwork: MIFARE® Classic or MIFARE® DESFire® / EV1
- ⚡ Versions with IP66 weather protection rating
- ⚡ Wireless online models: directly networked on 868 MHz
- ⚡ Virtual CardNetwork: for use in virtual networks

In the 868 MHz wireless online network, operators can use established MIFARE® Classic IDs and MIFARE Plus®, MIFARE® DESFire® / EV1, Calypso CSN, ISO 7816-4 Elementary File, and UID (CSN) as per ISO 14443 in conjunction with MIFARE®, Legic Advant and HID® iClass technology without any reprogramming. MIFARE® Classic or MIFARE® DESFire® / EV1 can be used in network-ready locking devices in the version as a Virtual CardNetwork.

## TECHNICAL SPECIFICATIONS

- ⚡ Digital Euro Profile Half Cylinder as per DIN 18252 / EN 1303 / DIN EN 15684
- ⚡ Thumb-turn diameter: 31 mm
- ⚡ Basic installation length: 30-10 mm (external/internal dimension)
- ⚡ Overall length: up to 100 mm (max. 90 mm on one side); special lengths on request
- ⚡ Standard protection rating IP54, WP version IP66 (electronic thumb-turn)
- ⚡ Battery type: 2 x lithium CR2450 3 V
- ⚡ Battery life:
  - Wireless online: up to 80,000 locking activations
  - Virtual CardNetwork: up to 50,000 locking activations
  - Wireless online stand-by: up to 5 years
  - Virtual CardNetwork stand-by: up to 6 years
- ⚡ Temperature range: Operational: -25 °C to +65 °C
- ⚡ Audible feedback signal from a buzzer
- ⚡ Visual feedback signal from blue/red LED

DIGITAL EURO PROFILE  
HALF CYLINDER –  
SMART INTEGO

WIRELESS ONLINE NETWORK  
(868 MHz)

- ⌘ Reads 5 different card set-ups
- ⌘ Opened after release by access control system (short release interval) with variable time settings
- ⌘ Permanent release (on/off) with timer function
- ⌘ Office mode with timer function
- ⌘ Construction White List function with up to 128 cards
- ⌘ White List function with up to 250 offline cards
- ⌘ Access list for offline mode
- ⌘ Battery status transmission and QoS (Quality of Signal)
- ⌘ Configurable “keep alive” event
- ⌘ Integrator Lock
- ⌘ Firmware update for locking devices via wireless interface
- ⌘ Auto-configuration via SmartIntego Manager (in TCP/IP GatewayNode models only)

VIRTUAL CARD NETWORK  
“VIRTUAL NETWORKING”

- ⌘ Issue of authorisations (access) based on groups and exception functions
- ⌘ Battery status feedback
- ⌘ Blacklist transfer, including feedback signal
- ⌘ Physical access lists
- ⌘ Time budget/expiry date
- ⌘ Data deletion on online terminal
- ⌘ Initial programming possible using access control manufacturer’s online reader
- ⌘ Time profiles on the card
- ⌘ Data transmission secure during writing and read procedure

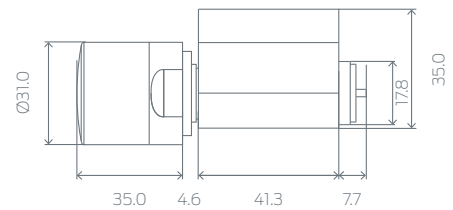
PRODUCT VERSIONS	WIRELESS ONLINE	VIRTUAL CARD NETWORK
Digital Euro Profile Half Cylinder – SI Installation length 30-10 mm, stainless steel design; door thumb-turn cannot be detached; internal power supply; can be operated on the outside with smart cards/smart tags; no wiring necessary.	SI.Z4.30-10.MI.HZ	SI.Z4.30-10.M.HZ
Brass design (on request)	.MS	.MS
Version with detachable thumb-turn	.DK	.DK
Multi-point version, thumb-turn detachable	.MR	.MR
Versions with IP66 weather protection rating (electronic thumb turn)	.WP	.WP

INSTALLATION LENGTHS (all length specifications: external - internal)

Overall length from 45 mm to 70 mm	e.g. SI.Z4.60-10.MI.HZ	e.g. SI.Z4.60-10.M.HZ
Overall length over 80 mm to 100 mm	e.g. SI.Z4.80-10.MI.HZ	e.g. SI.Z4.80-10.M.HZ
Overall length over 100 mm	on request	on request

# DIGITAL SCANDINAVIAN OVAL CYLINDER – SMART INTEGO

Digital Locking Cylinder – SI with an enclosed electronics assembly as per DIN EN 15684 / EN 1303 for fitting into doors with a Scandinavian Oval profile.



Measurements indicated in mm

- ⌘ Wireless online: MIFARE® Classic, MIFARE Plus®, MIFARE® DESFire® / EV1, Calypso CSN, ISO 7816-4 Elementary File, and UID (CSN) as per ISO 14443 in conjunction with MIFARE®, Legic Advant and HID® iClass
- ⌘ Virtual CardNetwork: MIFARE® Classic or MIFARE® DESFire® / EV1
- ⌘ Versions with IP66 weather protection rating
- ⌘ Wireless online models: directly networked on 868 MHz
- ⌘ Virtual CardNetwork: for use in virtual networks

In the 868 MHz wireless online network, operators can use established MIFARE® Classic IDs and MIFARE Plus®, MIFARE® DESFire® / EV1, Calypso CSN, ISO 7816-4 Elementary File, and UID (CSN) as per ISO 14443 in conjunction with MIFARE®, Legic Advant and HID® iClass technology without any reprogramming. MIFARE® Classic or MIFARE® DESFire® / EV1 can be used in network-ready locking devices in the version as a Virtual CardNetwork.

## TECHNICAL SPECIFICATIONS

- ⌘ Digital Scandinavian Oval Cylinder
- ⌘ Thumb-turn diameter: 31 mm
- ⌘ Basic installation length: 41.3 mm (external/internal dimension)
- ⌘ Total length: cam extension set to 6.35 mm or 7.45 mm (width); extension adapter can be trimmed on site
- ⌘ Standard protection rating IP54, WP version IP66
- ⌘ Battery type: 2 x lithium, CR2450, 3 V
- ⌘ Battery life:
  - Wireless online: up to 80,000 locking activations
  - Virtual CardNetwork: up to 50,000 locking activations
  - Wireless online stand-by: up to 5 years
  - Virtual CardNetwork stand-by: up to 6 years
- ⌘ Temperature range: Operational: -25 °C to +65 °C
- ⌘ Audible feedback signal from a buzzer
- ⌘ Visual feedback signal from blue/red LED



DIGITAL SCANDINAVIAN  
 OVAL CYLINDER –  
 SMART INTEGO

WIRELESS ONLINE NETWORK  
 (868 MHz)

- ⌘ Reads 5 different card set-ups
- ⌘ Opened after release by access control system (short release interval) with variable time settings
- ⌘ Permanent release (on/off) with timer function
- ⌘ Office mode with timer function
- ⌘ Construction White List function with up to 128 cards
- ⌘ White List function with up to 250 offline cards
- ⌘ Access list for offline mode
- ⌘ Battery status transmission and QoS (Quality of Signal)
- ⌘ Configurable “keep alive” event
- ⌘ Integrator Lock
- ⌘ Firmware update for locking devices via wireless interface
- ⌘ Auto-configuration via SmartIntego Manager (in TCP/IP GatewayNode models only)

VIRTUAL CARD NETWORK  
 “VIRTUAL NETWORKING”

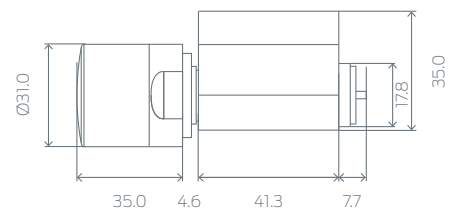
- ⌘ Issue of authorisations (access) based on groups and exception functions
- ⌘ Battery status feedback
- ⌘ Blacklist transfer, including feedback signal
- ⌘ Physical access lists
- ⌘ Time budget/ expiry date
- ⌘ Data deletion on online terminal
- ⌘ Initial programming possible using access control manufacturer’s online reader
- ⌘ Time profiles on the card
- ⌘ Data transmission secure during writing and read procedure

PRODUCT VERSIONS	WIRELESS ONLINE	Virtual CardNetwork
Digital Scandinavian Oval Cylinder – SI Installation length 41.3 mm, stainless steel design, internal power supply, operated from outside with smart cards/smart tags; no wiring required	SI.Z4.SO.A40.MI	SI.Z4.SO.A40.M
Brass design (on request)	.MS	.MS
Version with IP66 weather protection rating	.WP	.WP

INSTALLATION LENGTHS		
SO cylinder extension set. The set allows you to extend the Scandinavian cylinder cam by up to 50 mm (6.35 mm wide), Contents: 5 sets	Z4.SO.EXT.5	Z4.SO.EXT.5
SO cylinder extension set. The set allows you to extend the Scandinavian cylinder cam by up to 50 mm (7.45 mm wide), Contents: 5 sets	Z4.SO.EXT.745.5	Z4.SO.EXT.745.5

# DIGITAL SCANDINAVIAN ROUND CYLINDER – SMART INTEGO

Digital Locking Cylinder – SI with an enclosed electronics assembly as per DIN EN 15684 / EN 1303 for fitting into doors with a Scandinavian Round profile.



Measurements indicated in mm

- ⚡ Wireless online: MIFARE® Classic, MIFARE Plus®, MIFARE® DESFire® / EV1, Calypso CSN, ISO 7816-4 Elementary File, and UID (CSN) as per ISO 14443 in conjunction with MIFARE®, Legic Advant and HID® iClass
- ⚡ Virtual CardNetwork: MIFARE® Classic or MIFARE® DESFire® / EV1
- ⚡ Versions with IP66 weather protection rating
- ⚡ Wireless online models: directly networked on 868 MHz
- ⚡ Virtual CardNetwork: for use in virtual networks

In the 868 MHz wireless online network, operators can use established MIFARE® Classic IDs and MIFARE Plus®, MIFARE® DESFire® / EV1, Calypso CSN, ISO 7816-4 Elementary File, and UID (CSN) as per ISO 14443 in conjunction with MIFARE®, Legic Advant and HID® iClass technology without any reprogramming. MIFARE® Classic or MIFARE® DESFire® / EV1 can be used in network-ready locking devices in the version as a Virtual CardNetwork.

## TECHNICAL SPECIFICATIONS

- ⚡ Digital Scandinavian Round Cylinder
- ⚡ Thumb-turn diameter: 31 mm
- ⚡ Basic installation length: 41.3 mm (external/internal dimension)
- ⚡ Total length: cam extension set to 6.35 mm or 7.45 mm (width); extension adapter can be trimmed on site
- ⚡ Standard protection rating IP54, WP version IP66
- ⚡ Battery type: 2 x lithium, CR2450, 3 V
- ⚡ Battery life:
  - Wireless online: up to 80,000 locking activations
  - Virtual CardNetwork: up to 50,000 locking activations
  - Wireless online stand-by: up to 5 years
  - Virtual CardNetwork stand-by: up to 6 years
- ⚡ Temperature range: Operational: -25 °C to +65 °C
- ⚡ Audible feedback signal from a buzzer
- ⚡ Visual feedback signal from blue/red LED

DIGITAL SCANDINAVIAN  
ROUND CYLINDER –  
SMART INTEGO

WIRELESS ONLINE NETWORK  
(868 MHz)

- ⌘ Reads 5 different card set-ups
- ⌘ Opened after release by access control system (short release interval) with variable time settings
- ⌘ Permanent release (on/off) with timer function
- ⌘ Office mode with timer function
- ⌘ Construction White List function with up to 128 cards
- ⌘ White List function with up to 250 offline cards
- ⌘ Access list for offline mode
- ⌘ Battery status transmission and QoS (Quality of Signal)
- ⌘ Configurable “keep alive” event
- ⌘ Integrator Lock
- ⌘ Firmware update for locking devices via wireless interface
- ⌘ Auto-configuration via SmartIntego Manager (in TCP/IP GatewayNode models only)

VIRTUAL CARD NETWORK  
“VIRTUAL NETWORKING”

- ⌘ Issue of authorisations (access) based on groups and exception functions
- ⌘ Battery status feedback
- ⌘ Blacklist transfer, including feedback signal
- ⌘ Physical access lists
- ⌘ Time budget/expiry date
- ⌘ Data deletion on online terminal
- ⌘ Initial programming possible using access control manufacturer’s online reader
- ⌘ Time profiles on the card
- ⌘ Data transmission secure during writing and read procedure

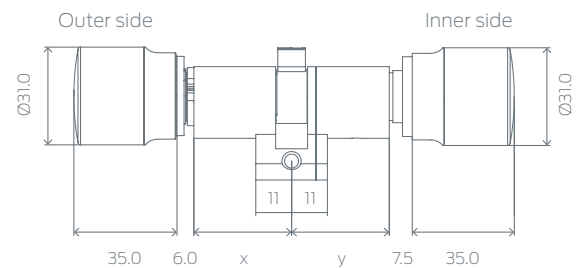
PRODUCT VERSIONS	WIRELESS ONLINE	Virtual CardNetwork
Digital Scandinavian Round Cylinder – SI Installation length 41.3 mm, stainless steel design, internal power supply, operated from outside with smart cards/smart tags; no wiring required	SI.Z4.RS.A40.MI	SI.Z4.RS.A40.M
Brass design (on request)	.MS	.MS
Version with IP66 weather protection rating	.WP	.WP

INSTALLATION LENGTHS

SO cylinder extension set. The set allows you to extend the Scandinavian cylinder cam by up to 50 mm (6.35 mm wide), Contents: 5 sets	Z4.SO.EXT.5	Z4.SO.EXT.5
SO cylinder extension set. The set allows you to extend the Scandinavian cylinder cam by up to 50 mm (7.45 mm wide), Contents: 5 sets	Z4.SO.EXT.745.5	Z4.SO.EXT.745.5

# DIGITAL SWISS ROUND DOUBLE THUMB-TURN CYLINDER – SMART INTEGO

Digital Locking Cylinder – SI with an enclosed electronics assembly as per DIN EN 15684 / EN 1303 for fitting into doors with a Swiss Round profile.



Measurements indicated in mm

- ⌘ Wireless online: MIFARE® Classic, MIFARE Plus®, MIFARE® DESFire® / EV1, Calypso CSN, ISO 7816-4 Elementary File, and UID (CSN) as per ISO 14443 in conjunction with MIFARE®, Legic Advant and HID® iClass
- ⌘ Virtual CardNetwork: MIFARE® Classic or MIFARE® DESFire® / EV1
- ⌘ Versions with IP66 weather protection rating
- ⌘ Wireless online models: directly networked on 868 MHz
- ⌘ Virtual CardNetwork: for use in virtual networks

In the 868 MHz wireless online network, operators can use established MIFARE® Classic IDs and MIFARE Plus®, MIFARE® DESFire® / EV1, Calypso CSN, ISO 7816-4 Elementary File, and UID (CSN) as per ISO 14443 in conjunction with MIFARE®, Legic Advant and HID® iClass technology without any reprogramming. MIFARE® Classic or MIFARE® DESFire® / EV1 can be used in network-ready locking devices in the version as a Virtual CardNetwork.

## TECHNICAL SPECIFICATIONS

- ⌘ Digital Swiss Round Double Thumb-Turn Cylinder – Comfort, inside knob can be operated without transponder
- ⌘ Thumb-turn diameter: 31 mm
- ⌘ Basic installation length: 30-30 mm (external/internal dimension)
- ⌘ Overall length: up to 140 mm (max. 90 mm on one side); special lengths on request
- ⌘ Standard protection rating IP54, WP version IP66 (electronic thumb-turn)
- ⌘ Battery type: 2 x lithium CR2450 3 V
- ⌘ Battery life:
  - Wireless online: up to 80,000 locking activations
  - Virtual CardNetwork: up to 50,000 locking activations
  - Wireless online stand-by: up to 5 years
  - Virtual CardNetwork stand-by: up to 6 years
- ⌘ Temperature range: Operational: -25 °C to +65 °C
- ⌘ Audible feedback signal from a buzzer
- ⌘ Visual feedback signal from blue/red LED

DIGITAL SWISS ROUND  
DOUBLE THUMB-TURN  
CYLINDER –  
SMART INTEGO

WIRELESS ONLINE NETWORK  
(868 MHz)

- ⌘ Reads 5 different card set-ups
- ⌘ Opened after release by access control system (short release interval) with variable time settings
- ⌘ Permanent release (on/off) with timer function
- ⌘ Office mode with timer function
- ⌘ Construction White List function with up to 128 cards
- ⌘ White List function with up to 250 offline cards
- ⌘ Access list for offline mode
- ⌘ Battery status transmission and QoS (Quality of Signal)
- ⌘ Configurable “keep alive” event
- ⌘ Integrator Lock
- ⌘ Firmware update for locking devices via wireless interface
- ⌘ Auto-configuration via SmartIntego Manager (in TCP/IP GatewayNode models only)

VIRTUAL CARD NETWORK  
“VIRTUAL NETWORKING”

- ⌘ Issue of authorisations (access) based on groups and exception functions
- ⌘ Battery status feedback
- ⌘ Blacklist transfer, including feedback signal
- ⌘ Physical access lists
- ⌘ Time budget/ expiry date
- ⌘ Data deletion on online terminal
- ⌘ Initial programming possible using access control manufacturer’s online reader
- ⌘ Time profiles on the card
- ⌘ Data transmission secure during writing and read procedure

PRODUCT VERSIONS	WIRELESS ONLINE	Virtual CardNetwork
Digital Swiss Round Double Thumb-Turn Cylinder – SI Installation length 30-30 mm, digital comfort cylinder, stainless steel design, internal power supply, door knob on both sides; can be operated from the outside with smart cards/smart tags; no medium required to operate from the inside; no wiring necessary	SI.Z4.SR.30-30.MI.CO	SI.Z4.SR.30-30.M.CO
Brass design (on request)	.MS	.MS
Version with IP66 weather protection rating (electronic thumb-turn)	.WP	.WP

INSTALLATION LENGTHS (all length specifications: external - internal)

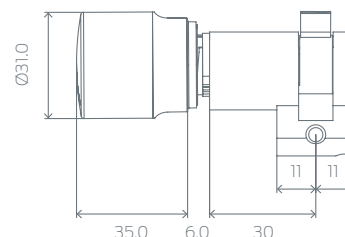
Overall length from 65 mm to 80 mm	e.g. SI.Z4.SR.40-40.MI.CO	e.g. SI.Z4.SR.40-40.M.CO
Overall length over 80 mm to 100 mm	e.g. SI.Z4.SR.40-60.MI.CO	e.g. SI.Z4.SR.40-60.M.CO
Overall length over 100 mm up to max. 140 mm (max. 90 mm on one side)	e.g. SI.Z4.SR.65-75.MI.CO	e.g. SI.Z4.SR.65-75.M.CO
Overall length over 140 mm or over 90 mm on one side	on request	on request

# DIGITAL SWISS ROUND HALF CYLINDER – SMART INTEGO

Digital Half Cylinder - SI with an enclosed electronics assembly as per DIN EN 15684 / EN 1303 for fitting into Swiss Round profile for special applications, such as use on garage doors or in lockers:

- ⌘ Wireless online: MIFARE® Classic, MIFARE Plus®, MIFARE® DESFire® / EV1, Calypso CSN, ISO 7816-4 Elementary File, and UID (CSN) as per ISO 14443 in conjunction with MIFARE®, Legic Advant and HID® iClass
- ⌘ Virtual CardNetwork: MIFARE® Classic or MIFARE® DESFire® / EV1
- ⌘ Versions with IP66 weather protection rating
- ⌘ Wireless online models: directly networked on 868 MHz
- ⌘ Virtual CardNetwork: for use in virtual networks

In the 868 MHz wireless online network, operators can use established MIFARE® Classic IDs and MIFARE Plus®, MIFARE® DESFire® / EV1, Calypso CSN, ISO 7816-4 Elementary File, and UID (CSN) as per ISO 14443 in conjunction with MIFARE®, Legic Advant and HID® iClass technology without any reprogramming. MIFARE® Classic or MIFARE® DESFire® / EV1 can be used in network-ready locking devices in the version as a Virtual CardNetwork.



Measurements indicated in mm

## TECHNICAL SPECIFICATIONS

- ⌘ Digital Swiss Round Half Cylinder – SI
- ⌘ Thumb-turn diameter: 31 mm
- ⌘ Basic installation length: 30-10 mm (external/internal dimension)
- ⌘ Overall length: up to 100 mm (max. 90 mm on one side); special lengths on request
- ⌘ Standard protection rating IP54, WP version IP66 (electronic thumb-turn)
- ⌘ Battery type: 2 x lithium CR2450 3 V
- ⌘ Battery life:
  - Wireless online: up to 80,000 locking activations
  - Wireless online network: up to 50,000 locking activations
  - Wireless online stand-by: up to 5 years
  - Wireless online network stand-by: up to 6 years
- ⌘ Temperature range: Operational: -25 °C to +65 °C
- ⌘ Audible feedback signal from a buzzer
- ⌘ Visual feedback signal from blue/red LED

DIGITAL SWISS ROUND  
 HALF CYLINDER –  
 SMART INTEGO

WIRELESS ONLINE NETWORK  
 (868 MHz)

- ⌘ Reads 5 different card set-ups
- ⌘ Opened after release by access control system (short release interval) with variable time settings
- ⌘ Permanent release (on/off) with timer function
- ⌘ Office mode with timer function
- ⌘ Construction White List function with up to 128 cards
- ⌘ White List function with up to 250 offline cards
- ⌘ Access list for offline mode
- ⌘ Battery status transmission and QoS (Quality of Signal)
- ⌘ Configurable “keep alive” event
- ⌘ Integrator Lock
- ⌘ Firmware update for locking devices via wireless interface
- ⌘ Auto-configuration via SmartIntego Manager (in TCP/IP GatewayNode models only)

VIRTUAL CARD NETWORK  
 “VIRTUAL NETWORKING”

- ⌘ Issue of authorisations (access) based on groups and exception functions
- ⌘ Battery status feedback
- ⌘ Blacklist transfer, including feedback signal
- ⌘ Physical access lists
- ⌘ Time budget/ expiry date
- ⌘ Data deletion on online terminal
- ⌘ Initial programming possible using access control manufacturer’s online reader
- ⌘ Time profiles on the card
- ⌘ Data transmission secure during writing and read procedure

PRODUCT VERSIONS	WIRELESS ONLINE	Virtual CardNetwork
Digital Swiss Round Half Cylinder – SI Installation length 30-10 mm, stainless steel design; door knob can be detached; powered internally; can be operated on the outside with smart cards/smart tags; no wiring necessary	SI.Z4.SR.30-10.MI.HZ	SI.Z4.SR.30-10.M.HZ
Brass design (on request)	.MS	.MS
Multi-point version	.MR	.MR
Version with IP66 weather protection rating (electronic thumb turn)	.WP	.WP

INSTALLATION LENGTHS (all length specifications: external - internal)

Overall length from 45 mm to 70 mm	e.g. SI.Z4.SR.60-10.MI.HZ	e.g. SI.Z4.SR.60-10.M.HZ
Overall length over 80 mm to 100 mm	e.g. SI.Z4.SR.80-10.MI.HZ	e.g. SI.Z4.SR.80-10.M.HZ
Overall length over 100 mm	on request	on request

# CONFIGURATION DIGITAL LOCKING CYLINDER – SMART INTEGO

## NETWORKING: WIRELESS ONLINE (868 MHZ)

### DIGITAL EURO PROFILE DOUBLE KNOB CYLINDER – SI – COMFORT SI – FD

	MS	MR	WP	SKG
SI CO	○	○	●	
SI FD	○	●	●	●
MS		○	○	
MR	○		●	
SKG	○		●	

### DIGITAL EURO PROFILE DOUBLE KNOB CYLINDER – SI – ANTI-PANIC

	MS	WP	SKG
AP2 FD	○	●	
AP2 BL	○	●	●
AP2 OK	○	●	
MS		○	
SKG BL		○	

### DIGITAL EURO PROFILE HALF CYLINDER – SI

	MS	MR	WP	DK
HZ	○	●	●	●
MS		●	○	○
MR	●		●	●
WP	○	●		●

### DIGITAL SCANDINAVIAN OVAL CYLINDER – SI ROUND CYLINDER – SI

	MS	WP
SO.A	○	●
RS.A	○	●
MS		○

### DIGITAL SWISS ROUND DOUBLE THUMB-TURN CYLINDER – SI

	MS	WP
SR CO	○	●
MS		○

### DIGITAL SWISS ROUND HALF CYLINDER – SI

	MS	WP
SR HZ	○	●
MS		○



# CONFIGURATION DIGITAL LOCKING CYLINDER – SMART INTEGO

## NETWORKING: VIRTUAL CARD NETWORK “VIRTUAL NETWORKING”

### DIGITAL EURO PROFILE DOUBLE THUMB-TURN CYLINDER – SI – COMFORT

	MS	MR	WP	SKG
SI CO	○	○	●	
MS		○	○	
MR	○		●	
SKG	○		●	

### DIGITAL EURO PROFILE DOUBLE KNOB CYLINDER – SI – ANTI-PANIC

	MS	WP	SKG
AP2 FD	○	●	
AP2 OK	○	●	
MS		○	
SKG BL	○	○	

### DIGITAL EURO PROFILE HALF CYLINDER – SI

	MS	MR	WP	DK
HZ	○	●	●	●
MS		●	○	○
MR	●		●	●
WP	○	●		●

### DIGITAL SWISS ROUND DOUBLE THUMB-TURN CYLINDER – SI

	MS	WP
SR CO	○	●
MS		○

### DIGITAL SWISS ROUND HALF CYLINDER – SI

	MS	WP
SR HZ	○	●
MS		○

- KEY:
- AP2 Anti-panic
  - BL Reader on both sides
  - DK Detachable thumb-turn
  - FD Freely rotating
  - HZ Half cylinder
  - MR Multi-point version
  - MS Brass version
  - OK Without thumb-turn on inside
  - RS Scandinavian Round
  - SKG SKG Approval SKG\*\*\*
  - SO Scandinavian Oval
  - SR Swiss Round
  - WP Weatherproof version



DIGITAL  
SMART HANDLES  
SMART INTEGO



## Exceptional design. Excellent technology

Architects, planners and designers all agree: the SimonsVoss digital door fitting is one of the leading solutions in terms of technology and aesthetics. Its balanced design impresses even the most demanding decision makers around the world.

In developing the wireless SmartIntego SmartHandles, it was also essential for SimonsVoss to focus on its special advantages for buildings with many users. SmartHandle uses a contactless system to communicate with identification media via the card reader integrated into the SmartHandle. It has an average battery life of five years and, like the cylinder, is maintenance-free in wireless online mode for up to 80,000 locking activations.

Another distinctive feature is the innovative snap-in installation. This simple, instant process can be used on doors up to 100 mm thick without any need to drill additional holes. Honoured with the red dot design award, SmartHandle is an obvious choice wherever timeless elegance and a stylish ambience are required thanks to its range of versions – Euro Profile, Scandinavian Oval and Swiss Round.



# DIGITAL SMART HANDLES – SMART INTEGO

COMPOSITION OF ITEM NO. WITH EXAMPLE:

**Identifier for digital door fitting = SI.SH**

Profile: **A = Euro Profile/Swiss Round**

- B = Scandinavian Oval
- C = Euro Profile with MO (mechanical override)
- D = Swiss Round with MO
- E = Scandinavian Oval with MO
- F = Euro Profile with escutcheon installation\*
- G = Swiss Round with escutcheon installation\*

Profile/door thickness: **S = 39-60 mm;** 33-50 mm for SO; 40-53 mm for F and G; 32-50 mm for SKG  
 M = 59-80 mm; 49-70 mm for SO; 52-73 mm for F and G; 50-70 mm for SKG  
 L = 79-100 mm; 69-94 mm for SO; 72-93 mm for F and G; 70-90 mm for SKG

Spindle: 07 = 7 mm  
 08 = 8 mm  
 F8 = 8 mm (version for fire doors) / 8 mm (08) only is available for SKG versions  
 8.5 mm (using SH.HUELSE.8.5 sleeve, see under Accessories)  
 09 = 9 mm (version for fire doors with Euro Profile locking device)  
**10 = 10 mm**

Fastening / plate width: A= Snap-in, narrow (41 mm)

- B = Snap-in, wide (53 mm)**
- C = conventional fastening, narrow (41 mm)
- D = conventional fastening, wide (53 mm)
- E = conventional fastening with MO – inside and outside recess, narrow (41 mm)
- F = conventional fastening with MO – inside and outside recess, wide (53 mm)
- G = conventional fastening with MO – inside blind / outside recess, narrow (41 mm)
- H = conventional fastening with MO – inside blind / outside recess, wide (53 mm)
- I = conventional fastening with MO – inside recess / outside blind, narrow (41 mm)
- J = conventional fastening with MO – inside recess / outside blind, wide (53 mm)
- K = conventional fastening with MO – inside and outside blind, narrow (41 mm)
- L = conventional fastening with MO – inside and outside blind, wide (53 mm)

Centres distance: 00 = conventional fastening  
 70 = 70 mm 88 = 88 mm  
 72 = 72 mm 90 = 90 mm  
 75 = 75 mm 92 = 92 mm  
 78 = 78 mm 94 = 94 mm (for Swiss Round only)  
**85 = 85 mm** 05 = 105 mm (for Scandinavian Oval only)

Version: 0 = Engaged (without electronics)  
**1 = Engages for use on one side**  
 2 = DoorMonitoring with SimonsVoss sensor  
 3 = DoorMonitoring with locking device sensor  
 4 = DoorMonitoring with time-controlled return function

Handle versions, outside: **A = L-shaped R (round, curved)**

- B = L-shaped G (mitred)
- C = U-shaped R (round, curved)
- D = U-shaped G (mitred)
- E = U-shaped R (round, curved), offset
- F = U-shaped G (mitred), offset

Handle versions inside: **A = L-shaped R (round, curved)**

- B = L-shaped G (mitred)
- C = U-shaped R (round, curved)
- D = U-shaped G (mitred)
- E = U-shaped R (round, curved), offset
- F = U-shaped G (mitred), offset
- K = Thumb-turn (for SKG version only)

Surface finish: **1 = brushed stainless steel**  
 3 = brass

Reader technology: 0 = without electronics

- A = Wireless online**  
 (MIFARE® Classic, MIFARE Plus®, MIFARE® DESFire® / EV1, Calypso CSN, ISO 7816-4 Elementary File, and UID (CSN) as ISO 14443 in conjunction with MIFARE®, Legic Advant and HID® iClass)
- 3 = Virtual CardNetwork (MIFARE® Classic or MIFARE® DESFire® / EV1)

Options: **WP**, DP anti-drilling protection (for SKG only), SKG (Euro Profile only)

SI.SH	AS	10	B	85	1	A	A	1	A	<b>WP</b>
-------	----	----	---	----	---	---	---	---	---	-----------

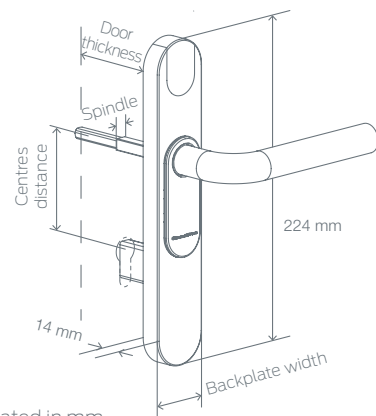
Item code for the aforementioned example: SI.SHAS10B851AA1AWP

\* Version can also be fitted on the existing fastening holes in conjunction with a mechanical secondary locking device thanks to its design and installation type

# DIGITAL SMART HANDLE – SMART INTEGO

This SimonsVoss digital door fitting SmartHandle for doors combines intelligent access control functions with an elegant, ergonomic design. Behind its slim, flat exterior, SmartHandle contains highly innovative technology.

Development of the new SmartHandle door fitting particularly took the requirements for the use of heavily used doors into account as these can be easily opened using the handle. SmartHandle can be used together with Euro Profile, Swiss Round and Scandinavian Oval mortise locks.



Measurements indicated in mm

## UNIQUE SELLING POINT

The innovative snap-in fitting system or the optional escutcheon fastening means that there is no need to drill holes in doors, thus ensuring existing doors are not damaged and installation times are greatly reduced.

## SYSTEM PRE-REQUISITES AND DEPENDENCIES ON OTHER PRODUCTS

SmartIntego configuration software (SI.SW) and programming device (SI.SMARTCD)

## FASTENING TYPES:

see next pages

## TECHNICAL SPECIFICATIONS

- ⚡ Types: Euro Profile cylinder (as per DIN 18252 / EN1303), Swiss Round, Scandinavian Oval
- ⚡ Dimensions (W x H x D)  
Narrow: 41 x 224 x 14 mm  
Wide: 53 x 224 x 14 mm
- ⚡ Dimensions SO (W x H x D)  
Narrow: 48 x 230.2 x 21.75 mm  
Wide: 59 x 229.2 x 21.75 mm
- ⚡ Wireless online reader technology:  
MIFARE® Classic, MIFARE Plus®, MIFARE® DESFire® / EV1, Calypso CSN, ISO 7816-4 Elementary File, and UID (CSN) as per ISO 14443 in conjunction with MIFARE®, Legic Advant and HID® iClass
- ⚡ Virtual CardNetwork reading technology:  
MIFARE® Classic or MIFARE® DESFire® / EV1
- ⚡ Battery type: 2x CR2450, 3 V, lithium
- ⚡ Battery life:  
Wireless online: up to 80,000 locking activations  
Virtual CardNetwork: up to 50,000 locking activations  
Wireless online stand-by: up to 5 years  
Virtual CardNetwork stand-by: up to 6 years
- ⚡ Temperature range: Operational: -20°C to +50°C
- ⚡ In storage (temporary): -40 °C to +70 °C  
In storage (long-term): 0°C to +30°C
- ⚡ Feedback signals: audible (buzzer) and visual (LED – blue/red)
- ⚡ Weatherproof version

# DIGITALES SMART HANDLE – SMART INTEGO



## WIRELESS ONLINE NETWORK (868 MHz)

- ⌘ Reads 5 different card set-ups
- ⌘ Opened after release by access control system (short release interval) with variable time settings
- ⌘ Permanent release (on/off) with timer function
- ⌘ Office mode with timer function
- ⌘ DoorMonitoring function with fastening screw sensor, bolt sensor and door handle sensor
- ⌘ DoorMonitoring function with external locking device sensor (locking device not included in the delivery package)
- ⌘ DoorMonitoring function with time-controlled escape return function
- ⌘ Construction White List function with up to 128 cards
- ⌘ White List function with up to 250 offline cards
- ⌘ Access list for offline mode
- ⌘ Battery status transmission and QoS (Quality of Signal)
- ⌘ Configurable “keep alive” event
- ⌘ Integrator Lock
- ⌘ Firmware update for locking devices via wireless interface
- ⌘ Auto-configuration via SmartIntego Manager (in TCP/IP GatewayNode models only)

## VIRTUAL CARD NETWORK “VIRTUAL NETWORKING”

- ⌘ Issue of authorisations (access) based on groups and exception functions
- ⌘ Battery status feedback
- ⌘ Blacklist transfer, including feedback signal
- ⌘ Physical access lists
- ⌘ Time budget/expiry date
- ⌘ Data deletion on online terminal
- ⌘ Initial programming possible using access control manufacturer’s online reader
- ⌘ Time profile on the card
- ⌘ Data transmission secure during writing and read procedure
- ⌘ Time-controlled escape return function

## FASTENING TYPES

Digital SmartHandle is available with four different types of fastening: Snap-in, conventional fastening, rose mounting or conventional fastening with mechanical override (MO).

# DIGITAL SMART HANDLE – SMART INTEGO

## BASIC VERSIONS

Description	WIRELESS ONLINE Order code	Virtual CardNetwork Order code
DIGITAL SMART HANDLE – SMART INTEGO		
Digital SmartHandle – SmartIntego – Snap-in Electronic door handle for mounting on doors, with handle lock designed for Euro Profile and Swiss Round. Outer side can be operated with MIFARE® smart cards/smart tags only; inner side is permanently engaged.	SI.SHA*...A**.....A***	SI.SHA*...A**.....3***
Digital SmartHandle – SmartIntego – Conventional Fastening Electronic door handle for conventional mounting with screws, with handle lock designed for Euro Profile and Swiss Round. Outer side can be operated with smart cards/smart tags only; inner side is permanently engaged.	SI.SHA*...C**.....A***	SI.SHA*...C**.....3***
Digital SmartHandle – SmartIntego – Conventional fastening with MO for Euro profile Electronic door handle for conventional mounting with screws, with handle lock designed for Euro Profile; outer side can only be operated with smart cards/smart tags; inside is always engaged ready for use.	SI.SHC*...E-L**.....A***	SI.SHC*...E-L**.....3***
Digital SmartHandle – SmartIntego – Conventional fastening with MO for Swiss Round Electronic door handle for conventional mounting with screws, with handle lock designed for Swiss Round; outer side can only be operated with smart cards/smart tags; inside is always engaged ready for use.	SI.SHD*...E-L**.....A***	SI.SHD*...E-L**.....3***

\* Identifier for profile: A = Euro Profile/Swiss Round, C = Euro Profile with mechanical override

\*\* Identifiers for fastening system/backplate width: A = Snap-in, narrow, B = Snap-in, wide, C = conventional fastening, narrow, E-L = versions for mechanical override

\*\*\* Identifiers for reader technology/option: A = MIFARE® Classic, MIFARE Plus®, MIFARE® DESFire® / EV1, Calypso CSN, ISO 7816-4 Elementary File, and UID (CSN) as per ISO 14443 in conjunction with MIFARE®, Legic Advant and HID® iClass, 3 = Virtual CardNetwork: MIFARE® Classic or MIFARE® DESFire® / EV1 technology

DIGITAL  
SMART HANDLE –  
SMART INTEGO

OPTIONS

Description	WIRELESS ONLINE Order code	Virtual CardNetwork Order code
PROFILE		
Euro Profile / Swiss Round	A	A
Euro Profile with mechanical override (MO)	C	C
Swiss Round with mechanical override (MO) (possible with 78 mm, 92 mm and 94 mm only)	D	D
DOOR THICKNESS		
39-60 mm	S	S
59 - 80 mm	M	M
79 - 100 mm	L	L
SPINDLE		
7 mm	07	07
8 mm	08	08
8 mm (fire door)	F8	F8
9mm (fire door)	09	09
10 mm	10	10
FASTENING/BACKPLATE WIDTH		
Snap-in backplate (41 mm)	A	A
Snap-in backplate (53 mm)	B	B
Conventional fastening, narrow (41 mm)	C	C
Conventional fastening, wide (53 mm)	D	D
MO, inside and outside cut-out, narrow (41 mm)	E	E
MO inside and outside cut-out, wide (53 mm)	F	F
MO inside blank, outside cut-out, narrow (41 mm)	G	G
MO inside blank, cut-out outside, wide (53 mm)	H	H
MO inside cut-out, outside blank, narrow (41 mm)	I	I
MO inside cut-out, outside blank, wide (53 mm)	J	J



DIGITAL  
SMART HANDLE –  
SMART INTEGO

Description	WIRELESS ONLINE Order code	Virtual CardNetwork Order code
MO inside and outside blank, narrow (41 mm)	K	K
MO inside and outside blank, wide (53 mm)	L	L
CENTRES DISTANCE*		
Conventional fastening	00	00
70 mm (for snap-in only)	70	70
72 mm (for snap-in and mechanical override only)	72	72
74 mm (for snap-in and mechanical override only)	74	74
75 mm (for snap-in and mechanical override only)	75	75
78 mm (for snap-in and mechanical override only)	78	78
85 mm (for snap-in and mechanical override only)	85	85
88 mm (for snap-in and mechanical override only)	88	88
92 mm (for snap-in and mechanical override only)	92	92
94 mm (for snap-in and mechanical override only) for Swiss Round version only; not Euro Profile cylinder	94	94
VERSION		
Engaged (for SmartHandle without electronics only)	0	0
Engages for use on one side (for all SmartHandles with electronics)	1	1
DoorMonitoring with the SimonsVoss sensor system	2	Not possible
DoorMonitoring with locking device sensor	3	Not possible
DoorMonitoring with time-controlled escape return function	4	4
HANDLE VERSIONS FOR OUTSIDE		
L-shaped R (rounded)	A	A
L-shaped G (mitred)	B	B
U-shaped R (rounded)	C	C
L-shaped G (mitred)	D	D

\* The centres distance is always 00 with fastening system C, D, K, L

DIGITAL  
SMART HANDLE –  
SMART INTEGO

Description	WIRELESS ONLINE Order code	Virtual CardNetwork Order code
U-shaped R (rounded), offset	E	E
U-shaped G (mitred), offset	F	F
HANDLE VERSION, INSIDE		
L-shaped R (rounded)	A	A
L-shaped G (mitred)	B	B
U-shaped R (rounded)	C	C
L-shaped G (mitred)	D	D
U-shaped R (rounded), offset	E	E
U-shaped G (mitred), offset	F	F
FINISH		
Stainless steel, brushed	1	1
Brass design (on request)	3	3
READER TECHNOLOGY		
Wireless online: MIFARE® Classic, MIFARE Plus®, MIFARE® DESFire® / EV1, Calypso CSN, ISO 7816-4 Elementary File, and UID (CSN) as per ISO 14443 in conjunction with MIFARE®, Legic Advant and HID® iClass	A	–
Virtual CardNetwork: MIFARE® Classic or MIFARE® DESFire® / EV1 technology	–	3
OPTIONS		
Weatherproof version (outer side of SmartHandle only)	WP	WP
SPINDLE		
Sleeve from 8 mm to 8.5 mm (10 units)	SH.HUELSE.8.5	SH.HUELSE.8.5
Sleeve from 7 mm to 8 mm (10 units)	SH.HUELSE.7.8	SH.HUELSE.7.8

# DIGITAL SMART HANDLE – SMART INTEGO ROSE MOUNTING

## BASIC VERSIONS

Description	WIRELESS ONLINE Order code	Virtual CardNetwork Order code
<b>DIGITAL SMART HANDLE – SMART INTEGO – ROSE MOUNTING</b>		
<p>Digital SmartHandle – SmartIntego – Rose mounting for Euro Profile Electronic door handle for mounting on doors; with a handle lock designed for Euro Profile; outside can be operated with MIFARE® Classic, MIFARE Plus® or MIFARE® DESFire® EV1 and UID as per ISO 14443 on MIFARE®, Legic Advant and HID iClass smart cards/smart tags; inner side always engaged ready for use</p>	SI.SHF*...B**...A*	SI.SHF*...B**...3*
Please note: MIFARE® Classic and UID as per ISO 14443 on MIFARE®, Legic Advant and HID iClass are only available for wireless online networking		
<p>Digital SmartHandle – SmartIntego – Rose mounting for Swiss Round Electronic door handle for mounting on doors; with a handle lock designed for Euro Profile; outside can be operated with MIFARE® Classic, MIFARE Plus® or MIFARE® DESFire® EV1 and UID as per ISO 14443 on MIFARE®, Legic Advant and HID iClass smart cards/smart tags; inner side always engaged ready for use</p>	SI.SHG*...B**...A*	SI.SHG*...B**...3*
Please note: MIFARE Plus® and UID as per ISO 14443 on MIFARE®, Legic Advant and HID iClass are only available for wireless online networking		

\* Identifier for profile: A = Euro Profile/Swiss Round, C = Euro Profile with mechanical override  
 \*\* Identifiers for fastening system/backplate width: A = Snap-in, narrow, B = Snap-in, wide, C = conventional fastening, narrow, E-L = versions for mechanical override  
 \*\*\* Identifiers for reader technology/option: A = MIFARE® Classic, MIFARE Plus®, MIFARE® DESFire® / EV1, Calypso CSN, ISO 7816-4 Elementary File, and UID (CSN) as per ISO 14443 in conjunction with MIFARE®, Legic Advant and HID® iClass, 3 = Virtual CardNetwork: MIFARE® Classic or MIFARE® DESFire® / EV1 technology

DIGITAL  
SMART HANDLE –  
SMART INTEGO  
ROSE MOUNTING

OPTIONS

Description	WIRELESS ONLINE Order code	Virtual CardNetwork Order code
PROFILE		
Euro Profile with rose mounting	F	F
Swiss Round with rose mounting	G	G
DOOR THICKNESS		
F: 40-53 mm	S	S
F: 52-73 mm	M	M
F: 72-93 mm	L	L
SPINDLE		
7 mm	07	07
8 mm	08	08
8 mm (fire door)	F8	F8
9mm (fire door)	09	09
10 mm	10	10
FASTENING/BACKPLATE WIDTH		
MO inside and outside cut-out, wide (53 mm)	F	F
MO inside blank, cut-out outside, wide (53 mm)	H	H
MO inside cut-out, outside blank, wide (53 mm)	J	J
MO inside and outside blank, wide (53 mm)	L	L

DIGITAL  
SMART HANDLE –  
SMART INTEGO  
ROSE MOUNTING

Description	WIRELESS ONLINE Order code	Virtual CardNetwork Order code
CENTRES DISTANCE*		
Conventional fastening	00	00
72 mm (for snap-in and mechanical override only)	72	72
74 mm (for snap-in and mechanical override only)	74	74
75 mm (for snap-in and mechanical override only)	75	75
78 mm (for snap-in and mechanical override only)	78	78
85 mm (for snap-in and mechanical override only)	85	85
88 mm (for snap-in and mechanical override only)	88	88
VERSION		
Engages for use on one side (for all SmartHandles with electronics)	1	1
DoorMonitoring with the SimonsVoss sensor system	2	
DoorMonitoring with locking device sensor	3	
DoorMonitoring with time-controlled escape return function	4	4
HANDLE VERSIONS FOR OUTSIDE		
L-shaped R (rounded)	A	A
L-shaped G (mitred)	B	B
U-shaped R (rounded)	C	C
L-shaped G (mitred)	D	D
U-shaped R (rounded), offset	E	E
U-shaped G (mitred), offset	F	F

\* The centres distance is always 00 with fastening system C, D, K, L

DIGITAL  
SMART HANDLE –  
SMART INTEGO  
ROSE MOUNTING

Description	WIRELESS ONLINE Order code	Virtual CardNetwork Order code
HANDLE VERSION, INSIDE		
L-shaped R (rounded)	A	A
L-shaped G (mitred)	B	B
U-shaped R (rounded)	C	C
L-shaped G (mitred)	D	D
U-shaped R (rounded), offset	E	E
U-shaped G (mitred), offset	F	F
FINISH		
Stainless steel, brushed	1	1
Brass design (on request)	3	3
READER TECHNOLOGY		
Wireless online: MIFARE® Classic, MIFARE Plus®, MIFARE® DESFire® / EV1, Calypso CSN, ISO 7816-4 Elementary File, and UID (CSN) as per ISO 14443 in conjunction with MIFARE®, Legic Advant and HID® iClass	A	
Virtual CardNetwork: MIFARE® Classic or MIFARE® DESFire® / EV1 technology		3
OPTIONS		
Weatherproof version (outer side of SmartHandle only)	WP	WP
SPINDLE		
Sleeve from 8 mm to 8.5 mm (10 units)	SH.HUELSE.8.5	SH.HUELSE.8.5
Sleeve from 7 mm to 8 mm (10 units)	SH.HUELSE.7.8	SH.HUELSE.7.8

# DIGITAL SMART HANDLE – SMART INTEGO SKG

## BASIC VERSIONS

Description	WIRELESS ONLINE Order code	Virtual CardNetwork Order code
<b>DIGITAL SMART HANDLE – SMART INTEGO SKG</b>		
Digital SmartHandle – SmartIntego – SKG – Conventional Fastening Electronic door handle for conventional mounting with screws, SKG approval SKG**, with handle lock designed for Euro Profile; outer side can be operated with MIFARE® smart cards/smart tags; inside is always engaged ready for use		
Please note: Can only be operated with MIFARE® Classic or MIFARE® DESFire® EV1 smart cards/smart tags in the Virtual CardNetwork		
Backplate width 41 mm	SI.SHA*.C**....ADP**	SI.SHA*.C**....3DP**
Backplate width 53 mm	SI.SHA*.D**....ADP**	SI.SHA*.D**....3DP**
<b>Digital SmartHandle – SmartIntego – SKG – DoorMonitoring – Conventional Fastening – AC functions</b>		
Electronic door handle for conventional mounting with screws, SKG approval SKG**, with self-locking panic handle locking device designed for Euro Profile; outer side can be operated with MIFARE® smart cards/smart tags; inside is always engaged ready for use. Network-ready: directly networked with integrated LockNode		
Backplate width 41 mm	SI.SHA*.C2**....ADP**	
Backplate width 53 mm	SI.SHA*.D2**....ADP**	
<b>Digital SmartHandle – SmartIntego – SKG – DoorMonitoring – Conventional Fastening – AC functions</b>		
to connect with a (self-locking panic) sensor locking device: Electronic door handle for mounting on doors, with handle lock designed for Euro Profile. Outer side can be operated with MIFARE® smart cards/smart tags; inside is always engaged ready for use. Network-ready: directly networked with integrated LockNode		
Backplate width 41 mm	SI.SHA*.C3**....ADP**	SI.SHA*.C4**....3DP**
Backplate width 53 mm	SI.SHA*.D3**....ADP**	SI.SHA*.D4**....3DP**

\* Identifier for profile: A = Euro Profile/Swiss Round, C = Euro Profile with mechanical override

\*\* Identifiers for fastening system/backplate width: A = Snap-in, narrow, B = Snap-in, wide, C = conventional fastening, narrow, E–L = versions for mechanical override

\*\*\* Identifiers for reader technology/option: A = MIFARE® Classic, MIFARE Plus®, MIFARE® DESFire® / EV1, Calypso CSN, ISO 7816-4 Elementary File, and UID (CSN) as per ISO 14443 in conjunction with MIFARE®, Legic Advant and HID® iClass, 3 = Virtual CardNetwork: MIFARE® Classic or MIFARE® DESFire® / EV1 technology

DIGITAL  
SMART HANDLE –  
SMART INTEGO  
SKG

Description	WIRELESS ONLINE Order code	Virtual CardNetwork Order code
<p>Digital SmartHandle – SmartIntego – SKG with time-controlled escape return function – Conventional Fastening Electronic door fitting for conventional mounting with screws; with a handle lock designed for Euro Profile; outside can only be operated with MIFARE® Classic, MIFARE Plus® or MIFARE® DESFire® EV1 or UID as per DIN 14443 on MIFARE®, Legic Advant and HID iClass smart cards/smart tags; inside is always engaged ready for use</p> <p>Please note: Can only be operated with MIFARE® Classic or MIFARE® DESFire® EV1 smart cards/smart tags in the Virtual CardNetwork</p>	<p>SI.SHA*..C4**....ADP** SI.SHA*..D4**....ADP**</p>	<p>SI.SHA*..C4**....3DP** SI.SHA*..D4**....3DP**</p>
<p>Backplate width 41 mm Backplate width 53 mm</p>		

\* Identifier for profile: A = Euro Profile/Swiss Round, C = Euro Profile with mechanical override

\*\* Identifiers for fastening system/backplate width: A = Snap-in, narrow, B = Snap-in, wide, C = conventional fastening, narrow, E–L = versions for mechanical override

\*\*\* Identifiers for reader technology/option: A = MIFARE® Classic, MIFARE Plus®, MIFARE® DESFire® / EV1, Calypso CSN, ISO 7816-4 Elementary File, and UID (CSN) as per ISO 14443 in conjunction with MIFARE®, Legic Advant and HID® iClass, 3 = Virtual CardNetwork: MIFARE® Classic or MIFARE® DESFire® / EV1 technology



DIGITAL  
SMART HANDLE –  
SMART INTEGO  
SKG

OPTIONS

Description	WIRELESS ONLINE Order code	Virtual CardNetwork Order code
PROFILE		
Euro Profile with mechanical override (MO)	C	C
DOOR THICKNESS		
32-50 mm	S	S
50-70 mm	M	M
70-90 mm	L	L
SPINDLE		
8 mm	08	08
FASTENING/BACKPLATE WIDTH		
Conventional fastening, wide (53 mm)	D	D
CENTRES DISTANCE*		
Extra charge for conventional fastening versions C, D, K, L	00	00
VERSION		
Engages for use on one side (for all SmartHandles with electronics)	1	1
HANDLE VERSIONS FOR OUTSIDE		
L-shaped R (rounded)	A	A
L-shaped G (mitred)	B	B
U-shaped R (rounded)	C	C
L-shaped G (mitred)	D	D
U-shaped R (rounded), offset	E	E
U-shaped G (mitred), offset	F	F

\* The centres distance is always 00 with fastening system C, D, K, L

DIGITALES  
SMART HANDLE –  
SMART INTEGO  
SKG

Description	WIRELESS ONLINE Order code	Virtual CardNetwork Order code
HANDLE VERSION, INSIDE		
L-shaped R (rounded)	A	A
L-shaped G (mitred)	B	B
U-shaped R (rounded)	C	C
L-shaped G (mitred)	D	D
U-shaped R (rounded), offset	E	E
U-shaped G (mitred), offset	F	F
Thumb-turn	K	K
FINISH		
Stainless steel, brushed	1	1
Brass design (on request)	3	3
READER TECHNOLOGY		
Wireless online: MIFARE® Classic, MIFARE Plus®, MIFARE® DESFire® / EV1, Calypso CSN, ISO 7816-4 Elementary File, and UID (CSN) as per ISO 14443 in conjunction with MIFARE®, Legic Advant and HID® iClass	A	
Virtual CardNetwork: MIFARE® Classic or MIFARE® DESFire® / EV1 technology		3
OPTIONS		
Weatherproof version (outer side of SmartHandle only)	WP	WP
Drilling protection	DP	DP
SPINDLE		
Sleeve from 8 mm to 8.5 mm (10 units)	SH.HUELSE.8.5	SH.HUELSE.8.5
Sleeve from 7 mm to 8 mm (10 units)	SH.HUELSE.7.8	SH.HUELSE.7.8



# DIGITAL SMART HANDLE – SCANDINAVIAN OVAL – SMART INTEGO



## BASIC VERSIONS

Description	WIRELESS ONLINE Order code	Virtual CardNetwork Order code
<b>DIGITAL SMART HANDLE – SCANDINAVIAN OVAL – SI</b>		
Digital SmartHandle – Scandinavian Oval – SI Electronic door handle for mounting on doors, with handle lock designed for Scandinavian Oval. Outer side can only be operated with smart cards/smart tags; inner side is permanently engaged	SI.SHB*.....A**	SI.SHB*.....3**
Digital SmartHandle – Scandinavian Oval – SI with MO Electronic door handle for mounting on doors; additional options for installing a mechanical cylinder as a secondary lock; with handle lock designed for Scandinavian Oval. Outer side can only be operated with smart cards/smart tags; inner side is permanently engaged	SI.SHE*.....A**	SI.SHE*.....3**

## OPTIONS

Description	WIRELESS ONLINE Order code	Virtual CardNetwork Order code
<b>PROFILE</b>		
Scandinavian Oval	B	B
Scandinavian Oval with mechanical override (MO)	E	E
<b>DOOR THICKNESS</b>		
33-50 mm 33-54 mm 30-51 mm for versions with anti-drilling protection	S	S
49-70 mm 53-74 mm 50-71 mm for versions with anti-drilling protection	M	M
69-94 mm 73-94 mm 70-91 mm for versions with anti-drilling protection	L	L
<b>SPINDLE</b>		
7 mm	07	07
8 mm	08	08
8 mm (fire door)	F8	F8
9 mm (fire door)	09	09
10 mm	10	10

\* Identifier for profile: A = Euro Profile/Swiss Round, C = Euro Profile with mechanical override

\*\* Identifiers for fastening system/backplate width: A = Snap-in, narrow, B = Snap-in, wide, C = conventional fastening, narrow, E–L = versions for mechanical override

\*\*\* Identifiers for reader technology/option: A = MIFARE® Classic, MIFARE Plus®, MIFARE® DESFire® / EV1, Calypso CSN, ISO 7816-4 Elementary File, and UID (CSN) as per ISO 14443 in conjunction with MIFARE®, Legic Advant and HID® iClass, 3 = Virtual CardNetwork: MIFARE® Classic or MIFARE® DESFire® / EV1 technology

DIGITAL  
 SMART HANDLE –  
 SCANDINAVIAN OVAL –  
 SMART INTEGO

Description	WIRELESS ONLINE Order code	Virtual CardNetwork Order code
FASTENING/BACKPLATE WIDTH		
Conventional fastening, narrow (41 mm: backplate 41 mm wide / adapter plate 48 mm wide)	C	C
Conventional fastening, wide (53 mm: backplate 53 mm wide / adapter plate 59 mm wide)	D	D
MO, inside and outside cut-out, narrow (41 mm)	E	E
MO, inside and outside cut-out, wide (53 mm)	F	F
MO inside blank, outside cut-out, narrow (41 mm)	G	G
MO inside blank, outside cut-out, wide (53 mm)	H	H
MO inside cut-out, outside blank, narrow (41 mm)	I	I
MO inside cut-out, outside blank, wide (53 mm)	J	J
MO inside and outside blank, narrow (41 mm)	K	K
MO inside and outside blank, wide (53 mm)	L	L
CENTRES DISTANCE		
105 mm	05	05

DIGITAL  
SMART HANDLE –  
SCANDINAVIAN OVAL –  
SMART INTEGO

Description	WIRELESS ONLINE Order code	Virtual CardNetwork Order code
VERSION		
Engaged (for SmartHandle without electronics only)	0	0
Engages for use on one side	1	1
DoorMonitoring with locking device sensor	3	
DoorMonitoring with time-controlled escape return function	4	4
HANDLE VERSIONS FOR OUTSIDE		
L-shaped R (rounded)	A	A
L-shaped G (mitred)	B	B
U-shaped R (rounded)	C	C
L-shaped G (mitred)	D	D
U-shaped R (rounded), offset	E	E
U-shaped G (mitred), offset	F	F
HANDLE VERSION, INSIDE		
L-shaped R (rounded)	A	A
L-shaped G (mitred)	B	B
U-shaped R (rounded)	C	C
L-shaped G (mitred)	D	D
U-shaped R (rounded), offset	E	E
U-shaped G (mitred), offset	F	F

DIGITAL  
SMART HANDLE –  
SCANDINAVIAN OVAL –  
SMART INTEGO

Description	WIRELESS ONLINE Order code	Virtual CardNetwork Order code
<b>FINISH</b>		
Stainless steel, brushed	1	1
Brass design (on request)	3	3
<b>READER TECHNOLOGY</b>		
Wireless online: MIFARE® Classic, MIFARE Plus®, MIFARE® DESFire® / EV1, Calypso CSN, ISO 7816-4 Elementary File, and UID (CSN) as per ISO 14443 in conjunction with MIFARE®, Legic Advant and HID® iClass	A	–
Virtual CardNetwork: MIFARE® Classic or MIFARE® DESFire® / EV1 technology	–	3
<b>OPTIONS</b>		
Weatherproof version (outer side of SmartHandle only)	WP	WP
Drilling protection	DP	DP

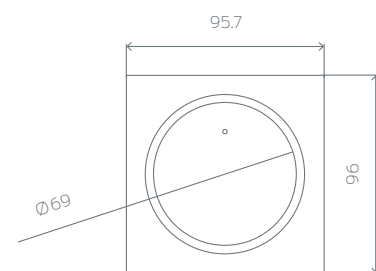


DIGITAL  
PIN CODE TERMINAL  
SMART INTEGO



# DIGITAL PIN CODE TERMINAL SMART INTEGO

Made of silver-coloured ABS plastic, the ultra-slim PIN code terminal can be mounted indoors or outdoors with no wiring necessary. It can be surface-mounted, also onto glass when required. Batteries last for up to 50,000 activations or up to five years on stand-by. Honoured with the IF Product Design Award, the exceptional SmartIntego Digital PIN code terminal functions reliably within a temperature range between - 25 °C and + 65 °C.



Measurements indicated in mm

## TECHNICAL SPECIFICATIONS

- ⌘ Silver-coloured ABS plastic housing
- ⌘ Dimensions: 96 x 95.7 x 14 mm (H x W x D)
- ⌘ Weight: about 120 g including batteries
- ⌘ Standard protection rating IP65
- ⌘ Battery type: 4 x CR2032, 3V, lithium
- ⌘ Battery life: up to 50,000 activations or up to five years on stand-by
- ⌘ 2-level battery warning system
- ⌘ Temperature range: -25 °C to +65 °C
- ⌘ Manipulation alarm
- ⌘ Cable-free surface mount
- ⌘ Received the IF Product Design Award 2006

## WIRELESS ONLINE NETWORK (868 MHZ)

- ⌘ PIN length determined in the PIN code terminal (number length: 1-9)
- ⌘ Flexible management and handling within the AC system (PIN, chip & PIN and similar)
- ⌘ Use in conjunction with SmartHandles, locking cylinders and padlocks
- ⌘ Use in conjunction with AC components (e.g. light control, alarm and similar)

## PRODUCT VERSIONS

PIN code Terminal – SmartIntego:  
Battery-operated, wireless PIN code terminal with 868 MHz wireless interface as identification medium, silver-coloured, ABS plastic housing, Standard protection rating IP65

SI.PINCODE

5 batteries for PIN code terminal (type: CR2032)

TRA.BAT



DIGITAL  
PADLOCKS  
SMART INTEGO

# DIGITAL PADLOCK SMART INTEGO



## TECHNICAL SPECIFICATIONS

- ⌘ Model with 8 mm shackle diameter  
Dimensions:  
(W x H x D) without cylinder thumb-turn 51 x 70 x 25 mm
- ⌘ Model with 11 mm shackle diameter  
Dimensions:  
(W x H x D) without cylinder thumb-turn 60 x 72.5 x 25 mm
- ⌘ Shackle diameter: 8 / 11 mm
- ⌘ Versions:  
ML: non-self-locking  
SL: Self-locking
- ⌘ Shackle height: 35 mm, 50 mm, 60 mm
- ⌘ Versions with IP66 weather protection rating
- ⌘ Battery type: 2x CR2450, 3 V, lithium
- ⌘ Battery life:  
Wireless online: up to 80,000 locking activations  
Virtual CardNetwork: up to 50,000 locking activations  
Wireless online stand-by: up to 5 years  
Virtual CardNetwork stand-by: up to 6 years
- ⌘ Temperature range:  
Operational: -25 °C to +55 °C  
In storage (temporary): -45 °C to +70 °C  
In storage (long-term): 0°C to +30°C

## WIRELESS ONLINE NETWORK (868 MHz)

- ⌘ Reads 5 different card set-ups
- ⌘ Opened after release by access control system (short release interval) with variable time settings
- ⌘ Permanent release (on/off) with timer function
- ⌘ Office mode with timer function
- ⌘ Construction White List function with up to 128 cards
- ⌘ White List function with up to 250 offline cards
- ⌘ Access list for offline mode
- ⌘ Battery status transmission and QoS (Quality of Signal)
- ⌘ Configurable "keep alive" event
- ⌘ Integrator Lock
- ⌘ Firmware update for locking devices via wireless interface
- ⌘ Auto-configuration via SmartIntego Manager (in TCP/IP GatewayNode models only)

## VIRTUAL CARD NETWORK "VIRTUAL NETWORKING"

- ⌘ Issue of authorisations (access) based on groups and exception functions
- ⌘ Battery status feedback
- ⌘ Blacklist transfer, including feedback signal
- ⌘ Physical access lists
- ⌘ Time budget / expiry date
- ⌘ Data deletion on online terminal
- ⌘ Initial programming possible using access control manufacturer's online reader
- ⌘ Time profile on the card
- ⌘ Data transmission secure during writing and read procedure

DIGITAL  
PADLOCK  
SMART INTEGO

PRODUCT VARIANTS	WIRELESS ONLINE	Virtual CardNetwork
<p>Digital Padlock SmartIntego with a shackle diameter of 8 mm and shackle inside height of 60 mm, internal power supply; locking device operated from outside with smart cards/smart tags; no wiring required; padlock dimensions: (W x H x D) without cylinder thumb turn 60 x 72.5 x 25 mm</p> <p>Non-self-locking</p> <p>Self-locking</p>	<p>SI.Z4.PL.08.60.MI.ML.WP</p> <p>SI.Z4.PL.08.60.MI.SL.WP</p>	<p>SI.Z4.PL.08.60.M.ML.WP</p> <p>SI.Z4.PL.08.60.M.SL.WP</p>
<p>Digital Padlock SmartIntego with a shackle diameter of 11 mm and shackle inside height of 35 mm, internal power supply; locking device operated from outside with smart cards/smart tags; no wiring required; padlock dimensions: (W x H x D) without cylinder thumb-turn 60 x 72.5 x 25 mm</p>	<p>SI.Z4.PL.11.35.MI.ML.WP</p>	<p>SI.Z4.PL.11.35.M.ML.WP</p>
<p>Digital Padlock SmartIntego with a shackle diameter of 11 mm and shackle inside height of 50 mm, internal power supply; locking device operated from outside with smart cards/smart tags; no wiring required; padlock dimensions: (W x H x D) without cylinder knob 60 x 72.5 x 25 mm</p> <p>Padlock – SmartIntego, self-locking</p>	<p>SI.Z4.PL.11.50.MI.SL.WP</p>	<p>SI.Z4.PL.11.50.M.SL.WP</p>





# PROGRAMMING SMART INTEGO

# PROGRAMMING DEVICE SMART INTEGO SMART CD

Programming Device SmartIntego SmartCD



The SI.SMARTCD is used as a programming device for SmartIntego. The SI.SMARTCD is connected to the configuration software (SI.SW) via a USB port. (No authorisation cards/IDs are programmed for users)

The following items may be programmed.

- ⚡ Creation of a battery replacement card This card can be used to reset a battery warning on the locking device concerned. The batteries need to be replaced before the reset.
- ⚡ Creation of a testing card to check the wireless connection between a locking device and a GatewayNode. An optical/audible feedback signal on the locking device indicates connection is established. The locking device is not opened during the test.
- ⚡ Construction site locking system: each card issued is authorised for all locking devices
- ⚡ Change to configuration on the locking device
- ⚡ Offline white list read from locking device

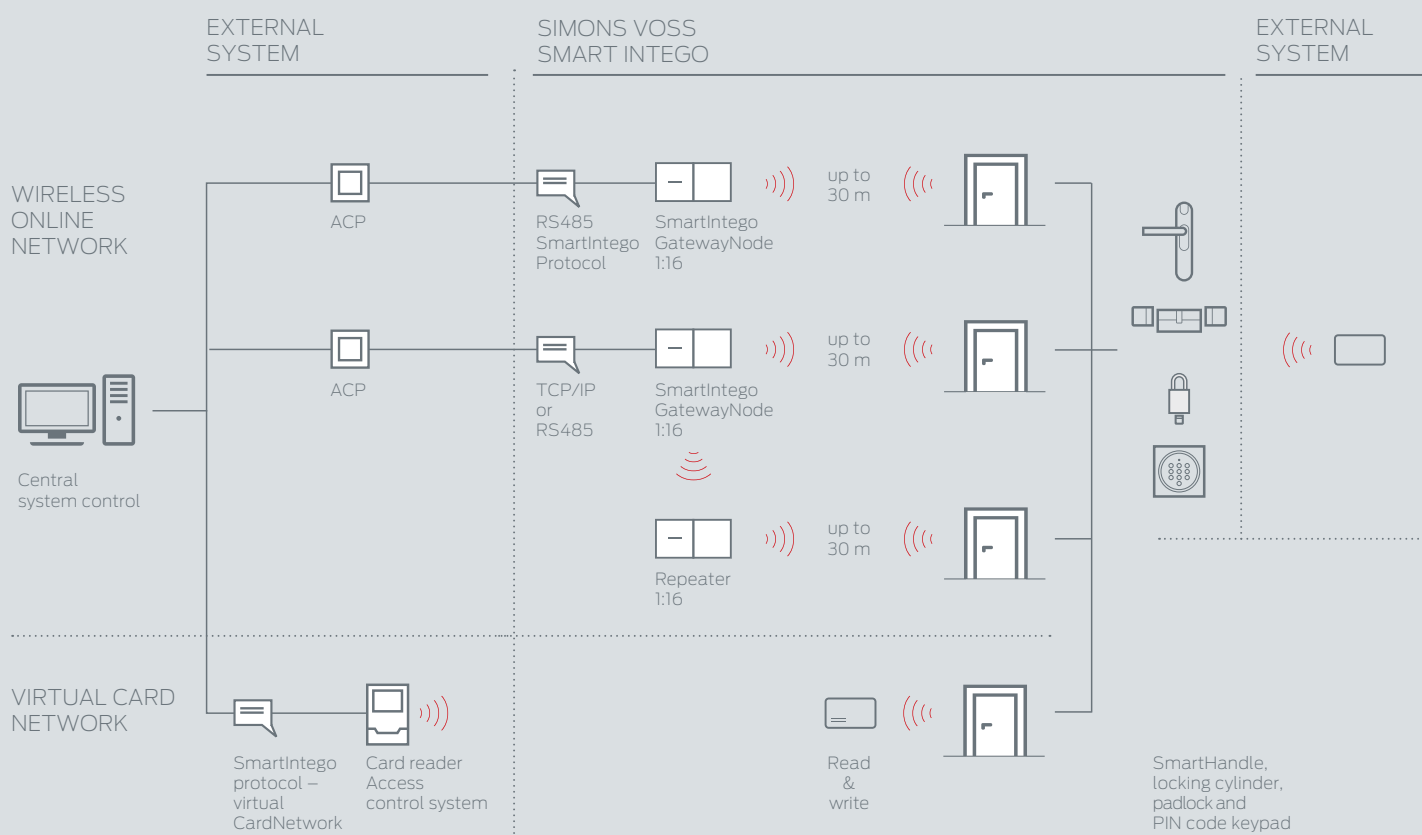
## TECHNICAL SPECIFICATIONS SMART INTEGO SMART CD (SI.SMARTCD)

- ⚡ Housing made of dark-grey polyamide
- ⚡ Dimensions: 112 x 63 x 22 mm (HxWxD)
- ⚡ Standard protection rating IP20
- ⚡ Power supply via USB port
- ⚡ Temperature range: -5 °C to +60 °C



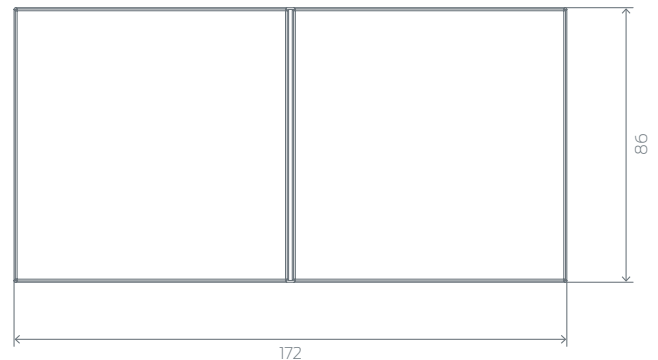
NETWORK STRUCTURE  
SMART INTEGO





# GATEWAY NODE – SMART INTEGO

The SmartIntego GatewayNode can be easily integrated into existing building network structures using TCP/IP or RS485. A connection can thus be established between the access control system (software) and the GatewayNode via standardised interfaces. Data transfer is thus assured from the node to the locking devices using the 868 MHz wireless interface. All necessary network settings are configured in the SmartIntego Manager in the SmartIntego software (SI.SW).



Measurements indicated in mm

## COMPONENT ASSEMBLIES

SmartIntego configuration software (SI.SW):

- ⚡ Software to configure all necessary settings, such as card technology used, to operate an access control system.
- ⚡ Once configuration is complete, SmartIntego makes the necessary network settings (IP settings, network topology/network addressing) and then the locking devices are programmed for initial operation.
- ⚡ A configuration file from SI.SW is then transferred to the access control system for continued operation.

GatewayNode:

- ⚡ TCP/IP (SI.GN2.ER or SI.GN2.ER.M) or RS485 (SI.GN.CR) connection to access control system to forward data to the locking devices via the wireless interface (868 MHz).
- ⚡ Up to 16 locking devices can be assigned to a GatewayNode.
- ⚡ The radio range between GatewayNode and locking device is up to 30 m within the building, depending on the building structure.
- ⚡ It is possible to increase the radio range with SI.GN.R (similar to a repeater function).
- ⚡ The quality of radio signals between the GatewayNode and the locking device can be determined using two testing devices (SI.GN.TESTER.BAMO.EU).

## TECHNICAL SPECIFICATIONS FOR

- ⚡ Housing made of ABS plastic, UV-stable; colour: 9/118645, same as RAL 9016 (Traffic white)
- ⚡ Dimensions: 172 x 86 x 33 mm (L x W x H)
- ⚡ External power supply: regulated mains adapter 9-24 V DC
- ⚡ Output: max. 3 VA
- ⚡ Radio module transmission power: 10 dBm (about 6.3 mW) to the antenna socket
- ⚡ Radio frequency: 868.xx-870 MHz
- ⚡ Power-over-Ethernet: All SI.GN2.ER(.M)s are PoE-capable (802.3af)

## GATEWAY NODE – SMART INTEGO

---

### SMART INTEGO WIRELESS NETWORK – HARDWARE

---

The SmartIntego Manager (software tool) allows you to automatically address all SmartIntego components via a radio or cable connection.

---

SI GatewayNode 2 for SmartIntego to convert from Ethernet to 868 MHz frequency, including connection capability for an external plug-in power supply (POWER.SUPPLY.2). Transmitting and receiver antenna integrated on router circuit board. Power-over-Ethernet-capable (802.3af)

SI.GN2.ER

GatewayNode 2 for SmartIntego Mercury to convert from Ethernet to 868 MHz frequency, including connection capability for an external plug-in power supply (POWER.SUPPLY.2). Transmitting and receiver antenna integrated on router circuit board. SUPPLIED IN CONJUNCTION WITH MERCURY CONTROLLERS ONLY. Power-over-Ethernet-capable (802.3af)

SI.GN2.ER.M

SmartIntego GatewayNode to extend range of 868 MHz transmission path; includes connecting terminals for external plug-in power supply

SI.GN.R

SmartIntego GatewayNode to convert from RS485 port to 868 MHz. This must be configured with the SI.GN.CONFIG.UC and the SmartIntego configuration software (SI.SW); includes connecting terminals for external plug-in power supply

SI.GN.CR

---

### GATEWAY NODE – SMART INTEGO ACCESSORIES

---

GatewayNode converter from TCP/IP to RS485 port for initial configuration of the SI.GN.CR. SI.GN.CONFIG.EC is only required for initial operation and configuration and is not needed for standard operation.

SI.GN.CONFIG.EC

Tester for analysing a SimonsVoss SmartIntego radio network at 868 MHz; consists of one base and one mobile station; users are required to receive training before use.

SI.TESTER.BAMO.EU

Training per hour

SERVICE

Separate power supply for GatewayNode 2

---

POWER.SUPPLY.2



CONFIGURATION SOFTWARE  
SMART INTEGO

# SOFTWARE SMART INTEGO

The SmartIntego software (SI:SW) is a tool to configure all necessary settings, such as card technology used, to operate an access control system. Once configuration is complete, SmartIntego makes the necessary network settings (IP settings, network topology/network addressing) and then the locking devices are programmed for initial operation.

SmartIntego Manager, a component of SI.SW, also has different analysis options within the radio network and for locking devices.

It is also possible to carry out firmware updates for locking devices using the radio network. This means that there is no need to update each locking device individually at its installation location.

A configuration file from SI.SW is then transferred to the access control system for continued operation.



# SUPPORT

# SERVICES AND TRAINING

---

## SERVICES

On-site project work	PROJEKT
Training on-site in building	SCHULUNG
Services as per service report	SERVICE

---

## TRAINING IN MUNICH

SmartIntego training	SI.BASIS.MUC
----------------------	--------------

---

## MOCK-UP

G2 Digital Locking Cylinder – SmartIntego demo model with standard fittings	SI.MOCKUP.Z4.MI
SmartHandle – SmartIntego demo model	SI.MOCKUP.SH.A
Robust aluminium case for mock-ups	MK
Demo model of Digital SmartHandle DoorMonitoring	on request

# PRODUCT OVERVIEW

<b>SMARTINTEGO PRODUCT LINE</b>		<b>SMART INTEGO NETWORK STRUCTURE</b>	<b>56</b>
DIGITAL LOCKING CYLINDER – SMART INTEGO	6	GatewayNode – SI	58
Digital Euro Profile Double Thumb-Turn Cylinder SI – Comfort	8		
Digital Euro Profile Double Thumb-Turn Cylinder SI – FD	10		
Digital Euro Profile Double Thumb-Turn Cylinder SI – Anti-Panic – FD	12	<b>CONFIGURATION SOFTWARE</b>	<b>60</b>
Digital Euro Profile Half Cylinder – SI	14	Configuration Software SI	61
Digital Scandinavian Oval Cylinder – SI	16		
Digital Scandinavian Round Cylinder – SI	18		
Digital Swiss Round Double Thumb-Turn Cylinder – SI	20		
Digital Swiss Round Half Cylinder – SI	22	<b>SUPPORT</b>	<b>62</b>
Configuration Networking Wireless online	24	Services and training	63
Configuration Networking Virtual CardNetwork	25	Product overview	64
<b>DIGITAL SMART HANDLES – SMART INTEGO</b>	<b>26</b>		
Digital SmartHandle – SI	30		
Digital SmartHandle – Rose mounting – SI	35		
Digital SmartHandle – SKG – SI	39		
Digital SmartHandle – Scandinavian Oval – SI	44		
<b>DIGITAL PIN CODE TERMINAL – SMARTINTEGO</b>	<b>48</b>		
Digital PIN Code Terminal – SI	49		
<b>SMART INTEGO DIGITAL PADLOCKS</b>	<b>50</b>		
Digital Padlock – SI	51		
<b>PROGRAMMING SMART INTEGO</b>	<b>54</b>		
Programming Device SmartIntego SmartCD	55		



# SIMONS VOSS WORLDWIDE

---

## GERMANY

MAIN OFFICE  
SimonsVoss Technologies GmbH  
Feringastrasse 4  
85774 Unterföhring

Tel. +49 89 992 280  
Fax +49 89 992 28 222  
vertrieb@simons-voss.com  
info@simons-voss.com

[www.smartintego.com](http://www.smartintego.com)

---

## GERMANY

PRODUCTION:  
SimonsVoss Technologies GmbH  
Lindenstrasse 6  
06721 Osterfeld  
(Kleinhelmsdorf district)

## BENELUX

SimonsVoss Technologies B.V.  
Evert van de Beekstraat 310  
1118 CX Schiphol  
The Netherlands

Tel. +31 20 6541882  
Fax +31 20 6541801  
benelux@simons-voss.com

---

## FRANCE

SimonsVoss Technologies SAS  
Immeuble Les Portes de Paris  
1/3, Rue du Rempart  
93160 Noisy le Grand

Tel. +33 148151480  
Fax +33 145922854  
france@simons-voss.com

## THE UK

SimonsVoss Technologies Ltd.  
1200 Century Way  
Thorpe Park, Colton  
Leeds LS15 8ZA

Tel. +44 113 2515 036  
Fax +44 113 2515 360  
uk@simons-voss.com

## ITALY

SimonsVoss Technologies GmbH  
Via Torino 2  
20123 Milano

Tel. +39 02 72 54 67 63  
Fax +39 02 72 54 64 00  
italy@simons-voss.com

---

## NORDIC COUNTRIES

SimonsVoss Technologies AB  
Ostermalmstorg 1  
Stockholm 114 42  
Sweden

Tel. +46 850 25 66 63  
Fax +46 850 25 65 00  
nordic@simons-voss.com

## AUSTRIA

SimonsVoss Technologies GmbH  
Kärntner Ring 5-7  
1010 Wien

Tel. +43 12051160-1146  
Fax +43 12051160-1008  
austria@simons-voss.com

## RUSSIA

SimonsVoss Technologies GmbH  
Ul. B. Tul'skaja, 10/2  
115191 Moscow

Tel. +7 495 737 72 08  
russia@simons-voss.com

---

## SWITZERLAND

SimonsVoss Technologies GmbH  
Dreikönigstrasse 31a  
8002 Zürich

Tel. +41 44 208-32 41  
Fax +41 44 208-35 00  
swiss@simons-voss.com

## ASIA

SimonsVoss Security  
Technologies (Asia) Pte. Ltd.  
178 Paya Lebar Road  
#04-10 Paya Lebar 178  
Singapore 409030  
Republic of Singapore

Tel. +65 6227 7318  
Fax +65 6227 7018  
asia@simons-voss.com

## MIDDLE EAST

SimonsVoss Technologies  
(Middle East) FZE  
P.O. Box 184220  
Dubai UAE

Tel. +97 14 881 58 35  
Fax +97 14 881 58 36  
uae@simons-voss.com

---







SimonsVoss Technologies GmbH  
Feringastrasse 4  
85774 Unterföhring  
Germany  
Tel. +49 89 992 280  
Fax +49 89 992 28 222  
info@simons-voss.com

[www.smartintego.com](http://www.smartintego.com)

**Simons Voss**  
technologies

© Copyright 2016, SimonsVoss Technologies GmbH, Unterföhring, Germany  
All rights are reserved. Text, images and diagrams are protected under copyright law.  
The contents of this brochure may not be copied, distributed or modified.  
You can find authoritative, detailed technical information in the system manual.  
Subject to technical changes.  
SimonsVoss and MobileKey are registered brands belonging SimonsVoss Technologies GmbH.

#### About Allegion™

Allegion (NYSE: ALLE) is a global pioneer in the security sector with leading brands such as CISA®, Interflex®, LCN®, Schlage®, SimonsVoss® and Von Duprin®. Allegion focuses on security for doors and entrance areas, offering a wide variety of solutions for private households, companies, schools and other institutions. Allegion generates a turnover of 2 billion dollars every year and sells its products in almost 130 countries. For more information, visit [www.allegion.com](http://www.allegion.com).

